

APPROVAL SHEET

WTCF2012FH Series COMMON MODE CHOKE

*Contents in this sheet are subject to change without prior notice.

Features

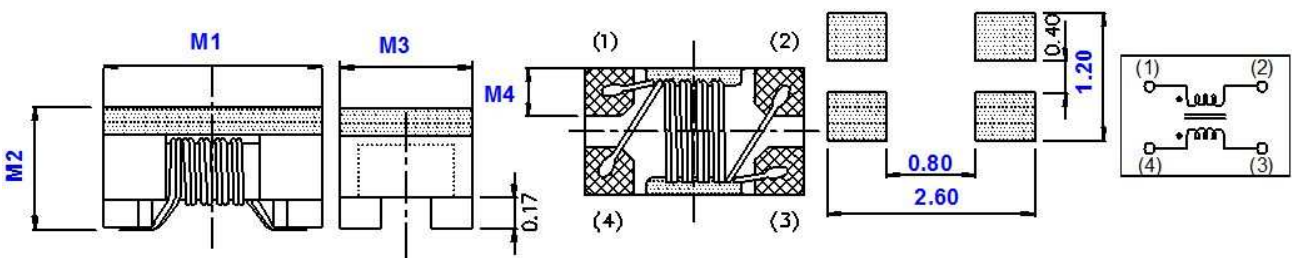
1. Wire wound type common mode choke.
2. Excellent solderability.

Applications

1. HDMI
2. DVI 、 Digital TVs 、 DVD recorders and LVDS.

Shape and Dimension

Unit: mm



SERIES	M1	M2	M3	M4
WTCF2012FH	2.0±0.2	1.20±0.2	1.20±0.2	0.40(TYP.)

Ordering Information

WT	CF	2012	FH	M	670	P	B
Product Code	Series	Dimensions	Series extension	Tolerance	Value	Packing Code	
WT: Transformer /Balun /Common Mode Choke	COMMON MODE CHOKE	2.0 * 1.2 mm	FH	M: ± 20%	670 = 67OHM 120 = 120OHM	P=7" Reeled (Embossed tape)	B:STD

Electrical Characteristics

WTCF2012FH Series	Z (OHM) @ 100MHz ±20%	DCR MAX. (Ω)	RATE CURRENT (mA)	Cut-off Frequency (GHz) TYP.	Rated Voltage (Vdc)	Insulation Resistance (MOHM) MIN.
WTCF2012FHM670PB	67	0.25	400	6	50	10
WTCF2012FHM900PB	90	0.30	370			
WTCF2012FHM121PB	120	0.35	330			

TEST INSTRUMENT

Z Tested by Agilent4291B+16193A

DCR Tested by Zentech502BC

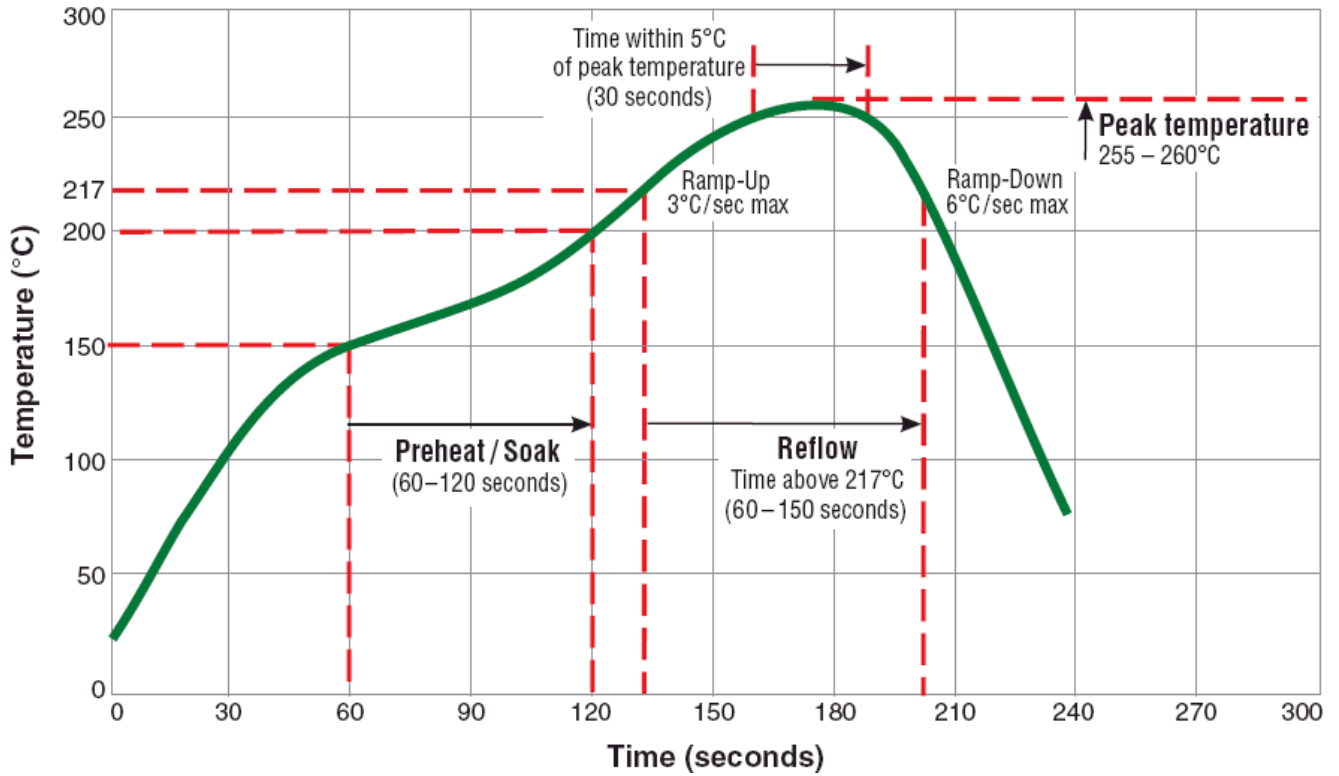
Insulation Resistance Tested by Agilent 4338B

Operating Temperature Range: -40°C ~ +125°C

※MSL:LEVEL 1

TYPICAL RoHS REFLOW PROFILE

Typical RoHS Reflow Profile



RELIABILITY PERFORMANCE

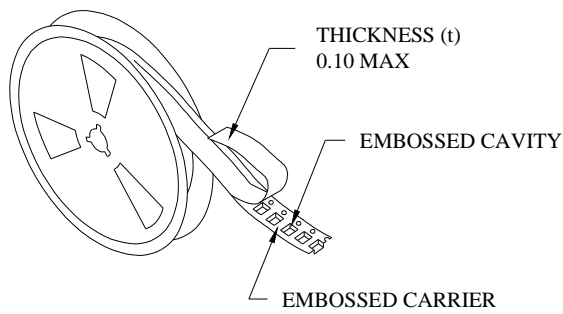
Reliability Experiment For Electrical

Test Item	Test Condition	Standard Source
Humidity Test	+40°C ± 2°C, humidity of 90% ± 5% (total 96 hours).	MIL-STD-202G Method 103B Test Condition B
High Temperature Test	1. Temperature: +125°C ± 2°C 2. Test time: 48 ± 2hrs	IEC 68-2 Test Condition B
Low Temperature Test	1. Temperature: -40°C ± 2°C 2. Test time: 48 ± 2hrs	IEC 68-2 Test Condition A
Thermal Shock	+125°C ± 5°C (30 minutes) ~ -40 ± 5°C (30 minutes), temperature switch time: 5 minutes (total 50 cycles).	MIL-STD-202G Method 107G Test Condition B-2
Life Test	+70°C ± 5°C (250Hours)	MIL-STD-202G Method 108A Test Condition B

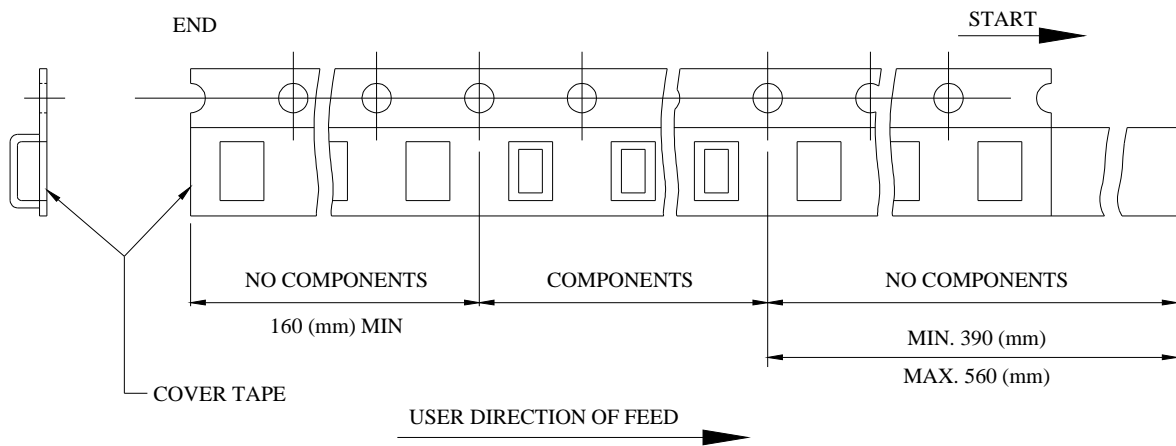
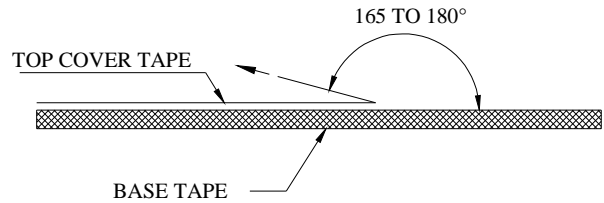
Reliability Experiment For Physical

Test Item	Test Condition	Standard Source
Vibration Test	10-55-10HZ, amplitude: 1.5mm, direction: X, Y, Z axes, each axis 2 hours (total 6 hours).	MIL-STD-202G Method 201A
Solder Heat Resistance Test	IR/convection reflow: Peak Temp 250 ± 5°C for 5Sec in air, Through 2 Cycle. Temperature Ramp: +1~4°C/sec; Above 183°C, must keep 90 s - 120 s	MIL-STD-202G Method 210F Test Condition (Reflow)
Solder Ability Test	Soak in 245 °C solder pot of 3Sec, PAD must have 95% above coverage.	J-STD-003B

Tape & Reel Packaging Dimensions:

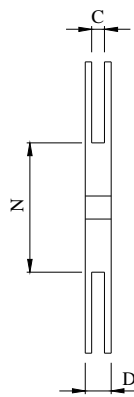
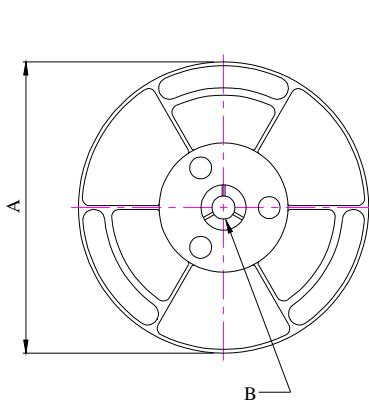


- THE FORCE FOR TEARING OFF COVER TAPE IS 10 TO 100 GRAMS IN THE ARROW DIRECTION.

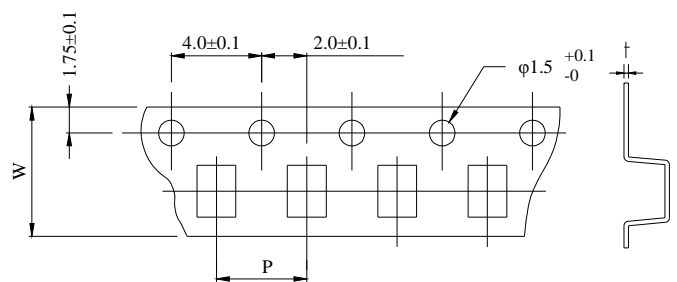


■ CARRIER TAPE REELS (mm)

MATERIAL: PLASTIC



■ DIMENSIONS OF CARRIER TAPE (mm)



UNIT : mm

	A	B	C	D	N	P	W	t
DIM.	178	13.0	8.4	12.5	75	4.0	8.00	0.24
TOL.	±2.0	±0.8	+1.0-0	MAX	±1.5	±0.10	±0.20	±0.01

Quantity per reel : 2K pcs