

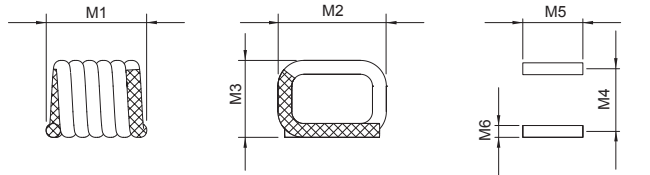
# LSQ0908A Series

## ■ SMD Square Air Wound Coil

### MECHANICAL DIMENSIONS



LSQ0908A



Recommended Patterns

unit: mm

Part Number	M1	M2	M3	M4	M5	M6
LSQ0908A-8N1 □	1.473±0.152	2.134±0.152	1.829±0.152	1.12	2.8	0.64
LSQ0908A-12N □	1.854±0.152	2.134±0.152	1.829±0.152	1.45	2.8	0.64
LSQ0908A-15N □	1.549±0.152	2.134±0.152	1.829±0.152	1.24	2.8	0.64
LSQ0908A-17N □	2.210±0.152	2.134±0.152	1.829±0.152	1.83	2.8	0.64
LSQ0908A-22N □	2.565±0.152	2.134±0.152	1.829±0.152	2.18	2.8	0.64
LSQ0908A-23N □	2.235±0.152	2.134±0.152	1.829±0.152	1.90	2.8	0.64
LSQ0908A-25N □	2.972±0.152	2.134±0.152	1.829±0.152	2.57	2.8	0.64
LSQ0908A-27N □	2.972±0.152	2.134±0.152	1.829±0.152	2.57	2.8	0.64
LSQ0908A-33N □	3.266±0.152	2.134±0.152	1.829±0.152	3.12	2.8	0.64

### ELECTRICAL SPECIFICATION

Part Number	Turns	Tolerance	Inductance (nH)	Q (Min.)	Test Freq (MHz)	DCR (mΩ) Max.	SRF (GHz) Min.	Rated Current (A) Max.
LSQ0908A-8N1 □	3	G, J	8.1	130	400	6.0	5.2	4.4
LSQ0908A-12N □	4	G, J	12.1	130	400	7.0	4.3	4.4
LSQ0908A-15N □	4	G, J	14.7	90	400	7.2	3.0	4.4
LSQ0908A-17N □	5	G, J	16.6	130	400	8.0	3.4	4.4
LSQ0908A-22N □	6	G, J	21.5	130	400	9.0	3.7	4.4
LSQ0908A-23N □	6	G, J	23.0	130	400	10.0	2.6	4.4
LSQ0908A-25N □	7	G, J	25.0	130	400	10.0	2.5	4.4
LSQ0908A-27N □	7	G, J	27.3	130	400	10.0	3.2	4.4
LSQ0908A-33N □	8	G, J	33	100	400	12.0	3.2	4.4

- Tolerance: G=±2% ; J=±5%
- Test Equipment:  
L/Q: HP-4291B With HP16193A test fixture or equivalent.  
SRF: HP8753E or equivalent.  
RDC: Chroma 16502 or equivalent.

- Operating temperature range: -40°C to +125°C
- For Temperature Rise; 15°C
- Storage Temp.: -40°C to +85°C
- MSL: Level 1

### CHARACTERISTIC CURVE

#### LSQ0908A Series

