

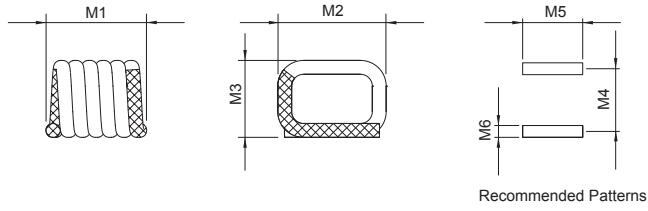
LSQ0807A Series

■ SMD Square Air Wound Coil

MECHANICAL DIMENSIONS



LSQ0807A



unit: mm

Part Number	M1	M2	M3	M4	M5	M6
LSQ0807A-6N9 □	1.295±0.102	1.829±0.254	1.524±0.254	1.02	2.6	0.51
LSQ0807A-10N □	1.626±0.152	1.829±0.254	1.524±0.254	1.32	2.6	0.51
LSQ0807A-11N □	1.549±0.152	1.829±0.254	1.524±0.254	1.24	2.6	0.51
LSQ0807A-14N □	1.930±0.152	1.829±0.254	1.524±0.254	1.63	2.6	0.51
LSQ0807A-17N □	2.286±0.152	1.829±0.254	1.524±0.254	1.96	2.6	0.51
LSQ0807A-22N □	2.591±0.152	1.829±0.254	1.524±0.254	2.29	2.6	0.51

ELECTRICAL SPECIFICATION

Part Number	Turns	Tolerance	Inductance (nH)	Q (Min.)	Test Freq (MHz)	DCR (mΩ) Max.	SRF (GHz) Min.	Rated Current (A) Max.
LSQ0807A-6N9 □	3	G, J	6.9	100	400	6.0	4.6	2.7
LSQ0807A-10N □	4	G, J	10.2	100	400	7.0	4.0	2.7
LSQ0807A-11N □	4	G, J	11.2	90	400	6.3	3.6	2.7
LSQ0807A-14N □	5	G, J	13.7	100	400	8.0	4.3	2.7
LSQ0807A-17N □	6	G, J	17.0	100	400	9.0	4.0	2.7
LSQ0807A-22N □	7	G, J	22.0	100	400	10.0	3.5	2.7

• Tolerance: G=±2% ; J=±5%

• Test Equipment:

L/Q: HP-4291B With HP16193A test fixture or equivalent.

SRF: HP8753E or equivalent.

RDC: Chroma 16502 or equivalent.

• Operating temperature range: -40°C to +125°C

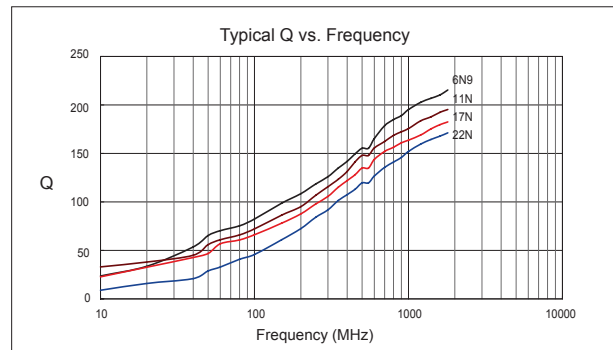
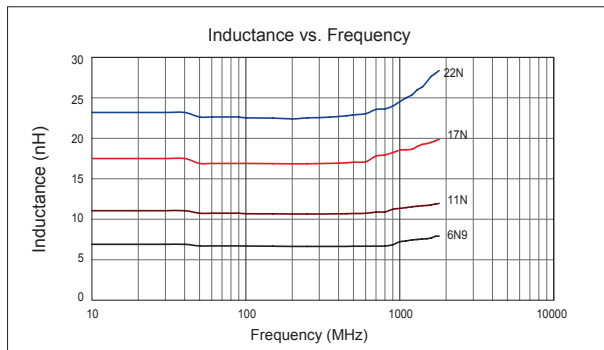
• For Temperature Rise; 15°C

• Storage Temp.: -40°C to +85°C

• MSL: Level 1

CHARACTERISTIC CURVE

LSQ0807A Series



SMD

Leaded