

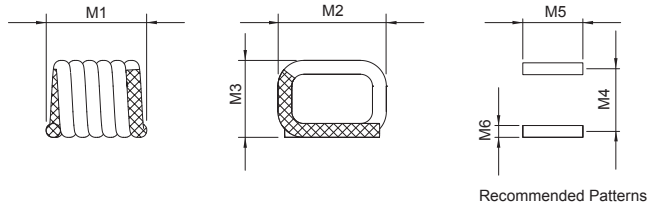
# LSQ0806A Series

## ■ SMD Square Air Wound Coil

### MECHANICAL DIMENSIONS



LSQ0806A



unit: mm

Part Number	M1	M2	M3	M4	M5	M6
LSQ0806A-5N5 □	1.346±0.102	1.829±0.254	1.397±0.102	0.962	2.6	0.51
LSQ0806A-6N0 □	1.295±0.102	1.829±0.254	1.397±0.102	1.02	2.6	0.51
LSQ0806A-8N9 □	1.626±0.152	1.829±0.254	1.397±0.102	1.32	2.6	0.51
LSQ0806A-12N □	1.930±0.152	1.829±0.254	1.397±0.102	1.63	2.6	0.51
LSQ0806A-16N □	2.286±0.152	1.829±0.254	1.397±0.102	1.96	2.6	0.51
LSQ0806A-19N □	2.591±0.152	1.829±0.254	1.397±0.102	2.29	2.6	0.51

### ELECTRICAL SPECIFICATION

Part Number	Turns	Tolerance	Inductance (nH)	Q (Min.)	Test Freq (MHz)	DCR (mΩ) Max.	SRF (GHz) Min.	Rated Current (A) Max.
LSQ0806A-5N5 □	3	G, J	5.5	60	400	3.4	4.9	2.9
LSQ0806A-6N0 □	3	G, J	6	64	400	6	5.2	2.9
LSQ0806A-8N9 □	4	G, J	8.9	90	400	7	4.3	2.9
LSQ0806A-12N □	5	G, J	12.3	90	400	8	4.8	2.9
LSQ0806A-16N □	6	G, J	15.7	90	400	9	4.4	2.9
LSQ0806A-19N □	7	G, J	19.4	90	400	10	4	2.9

• Tolerance: G=±2% ; J=±5%

• Test Equipment:

L/Q: HP-4291B With HP16193A test fixture or equivalent.

SRF: HP8753E or equivalent.

RDC: Chroma 16502 or equivalent.

• Operating temperature range: -40°C to +125°C

• For Temperature Rise; 15°C

• Storage Temp.: -40°C to +85°C

• MSL: Level 1

### CHARACTERISTIC CURVE

#### LSQ0806A Series

