

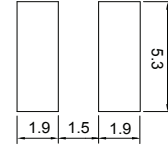
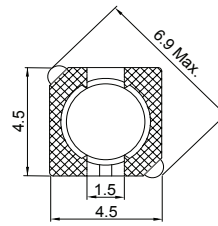
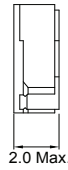
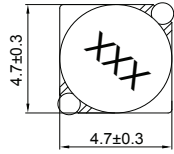
# CSS0418P Series (SHIELDED)

## ■ SMD Wire Wound Power Inductors

### MECHANICAL DIMENSIONS



CSS0418P



Recommended Patterns

unit: mm

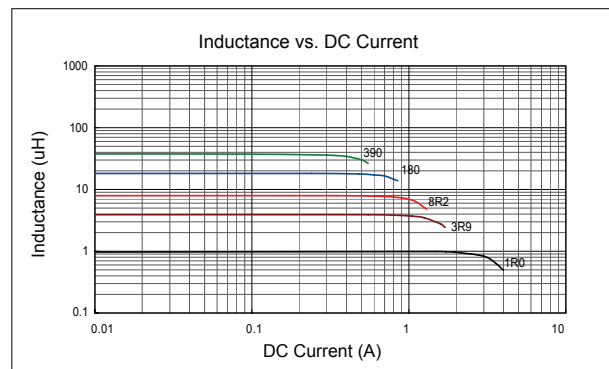
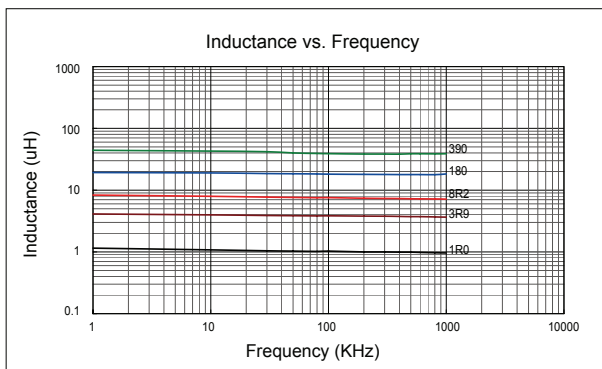
### ELECTRICAL SPECIFICATION

Part Number	Marking	Inductance (μH)	Test Freq.	DCR (mΩ) Max.	Rated Current (A)
CSS0418P-1R0N-LRH	1R0	1.0	7.96 MHz	45	1.72
CSS0418P-2R2N-LRH	2R2	2.2	7.96 MHz	75	1.32
CSS0418P-2R7N-LRH	2R7	2.7	7.96 MHz	105	1.28
CSS0418P-3R3N-LRH	3R3	3.3	7.96 MHz	110	1.04
CSS0418P-3R9N-LRH	3R9	3.9	7.96 MHz	155	0.88
CSS0418P-4R7N-LRH	4R7	4.7	7.96 MHz	162	0.84
CSS0418P-5R6N-LRH	5R6	5.6	7.96 MHz	170	0.80
CSS0418P-6R8N-LRH	6R8	6.8	7.96 MHz	200	0.76
CSS0418P-8R2N-LRH	8R2	8.2	7.96 MHz	245	0.68
CSS0418P-100N-LRH	100	10	100 KHz	200	0.61
CSS0418P-120N-LRH	120	12	100 KHz	210	0.56
CSS0418P-150N-LRH	150	15	100 KHz	240	0.50
CSS0418P-180N-LRH	180	18	100 KHz	338	0.48
CSS0418P-220N-LRH	220	22	100 KHz	397	0.41
CSS0418P-270N-LRH	270	27	100 KHz	441	0.35
CSS0418P-330N-LRH	330	33	100 KHz	694	0.32
CSS0418P-390N-LRH	390	39	100 KHz	709	0.30

- Tolerance: N=±30% ; M=±20% ; L=±15%
- Operating Temperature Range: -30°C to +100°C (Including self-generated heat)
- Inductance measured using the HP4284A ; Chroma3302+1320
- DCR measured using the 16502 milli-ohm meter
- Inductance drop no more than 35% of initial value at Isat, temperature rises Δ t<40°C at rated current.
- Storage Temperature Range: -40°C to +85°C

### CHARACTERISTIC CURVE

#### CSS0418P Series



SMD

Leaded