

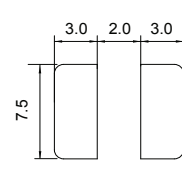
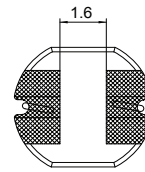
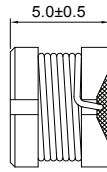
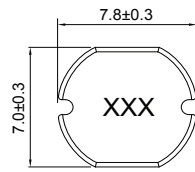
CSN075D Series (UNSHIELDED)

■ SMD Wire Wound Power Inductors

MECHANICAL DIMENSIONS



CSN075D



Recommended Patterns

unit: mm

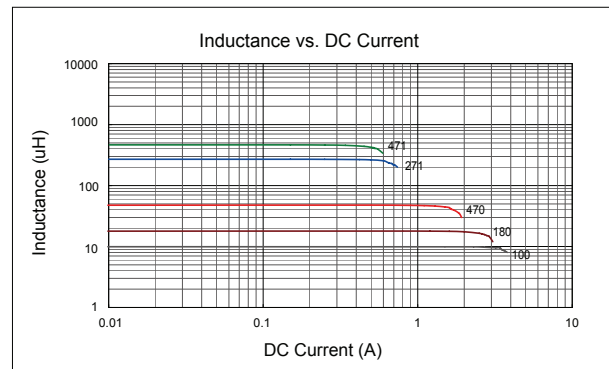
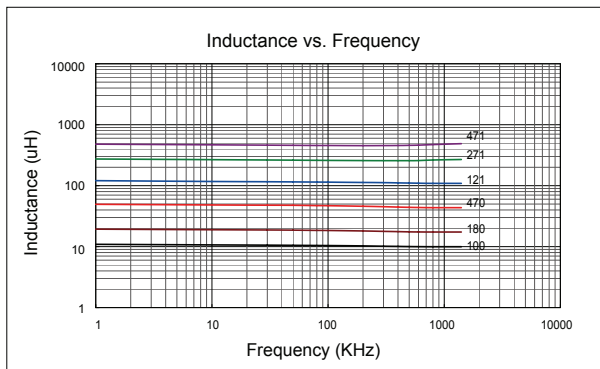
ELECTRICAL SPECIFICATION

Part Number	Marking	Inductance (μH)	Test Freq. (KHz)	DCR (Ω) Max.	Rated Current (A)
CSN075D-6R8K-LRH	6R8	6.8	100	0.058	3.00
CSN075D-8R2K-LRH	8R2	8.2	100	0.06	2.40
CSN075D-100K-LRH	100	10	100	0.07	2.30
CSN075D-120K-LRH	120	12	100	0.08	2.00
CSN075D-150K-LRH	150	15	100	0.09	1.80
CSN075D-180K-LRH	180	18	100	0.10	1.60
CSN075D-220K-LRH	220	22	100	0.11	1.50
CSN075D-270K-LRH	270	27	100	0.12	1.30
CSN075D-330K-LRH	330	33	100	0.13	1.20
CSN075D-390K-LRH	390	39	100	0.16	1.10
CSN075D-470K-LRH	470	47	100	0.18	1.10
CSN075D-560K-LRH	560	56	100	0.24	0.94
CSN075D-680K-LRH	680	68	100	0.28	0.85
CSN075D-820K-LRH	820	82	100	0.37	0.78
CSN075D-101K-LRH	101	100	10	0.43	0.72
CSN075D-121K-LRH	121	120	10	0.47	0.66
CSN075D-151K-LRH	151	150	10	0.64	0.58
CSN075D-181K-LRH	181	180	10	0.71	0.51
CSN075D-221K-LRH	221	220	10	0.96	0.49
CSN075D-271K-LRH	271	270	10	1.11	0.42
CSN075D-331K-LRH	331	330	10	1.26	0.40
CSN075D-391K-LRH	391	390	10	1.77	0.36
CSN075D-471K-LRH	471	470	10	1.96	0.34
CSN075D-302K-LRH	302	3000	1	10.0	0.12

- Tolerance: M=±20% ; L=±15% ; K=±10%
- Operating Temperature Range: -30°C to +100°C (Including self-generated heat)
- Inductance measured using the HP4284A ; Chroma 3302+1320
- DCR measured using the 16502 milli-ohm meter
- Inductance drop no more than 10% of initial value at rated current ,temperature rises Δ t<40°C
- Storage Temperature Range: -40°C to +85°C

CHARACTERISTIC CURVE

CSN075D Series



SMD

Leaded