

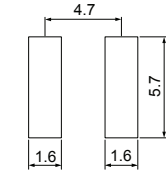
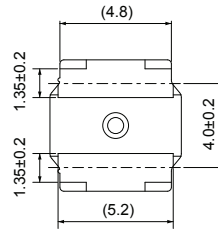
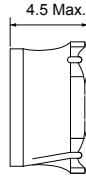
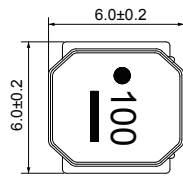
CSMS0645D Series (SHIELDED)

■ SMD Wire Wound Power Inductors

MECHANICAL DIMENSIONS



CSMS0645D



Recommended Patterns

unit: mm

ELECTRICAL SPECIFICATION

Part Number	Marking	Inductance @100KHz (uH)	Inductance Tolerance	DCR ±30% (Ω)	Rated Current (mA)		SRF (MHz) Min.
					Saturation Current Idc1	Temperature Rise Current Idc2	
CSMS0645D-1R0N-LRH	1R0	1.0	±30%	0.014	9800	4500	110
CSMS0645D-1R3N-LRH	1R3	1.3	±30%	0.016	8200	4200	95
CSMS0645D-1R8N-LRH	1R8	1.8	±30%	0.019	7200	3900	80
CSMS0645D-2R3N-LRH	2R3	2.3	±30%	0.022	6400	3600	60
CSMS0645D-3R0N-LRH	3R0	3.0	±30%	0.024	5600	3300	45
CSMS0645D-4R5M-LRH	4R5	4.5	±20%	0.030	4400	3100	25
CSMS0645D-6R3M-LRH	6R3	6.3	±20%	0.036	3600	3000	15
CSMS0645D-100M-LRH	100	10	±20%	0.046	3100	2400	12
CSMS0645D-150M-LRH	150	15	±20%	0.070	2500	1900	10
CSMS0645D-220M-LRH	220	22	±20%	0.107	2000	1600	7
CSMS0645D-330M-LRH	330	33	±20%	0.141	1650	1400	6
CSMS0645D-470M-LRH	470	47	±20%	0.211	1400	1150	5
CSMS0645D-680M-LRH	680	68	±20%	0.304	1100	950	4
CSMS0645D-101M-LRH	101	100	±20%	0.466	900	750	3

- Operating temperature Range: -25°C to +125°C (Including self-temperature rise)
- Storage Temp. Range: -40°C to +85°C
- Inductance measured using the HP4285A and Chroma 1320 & 3302
- DCR measured using Chroma 16502
- SRF measured using the HP4291B
- Saturation Current Idc1: The value of current causes a 30% inductance reduction from initial value.(at Ta: 20°C)
- Temperature rise current Idc2: The value of current causes a 40°C temperature rise.(at Ta: 20°C)
- Rated Current: Either Idc1 or Idc2 whichever is smaller
- MSL: Level 1

CHARACTERISTIC CURVE

CSMS0645D Series

