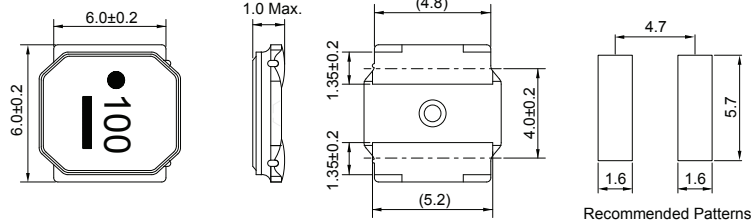


# CSMS0610D Series (SHIELDED)

## ■ SMD Wire Wound Power Inductors

### MECHANICAL DIMENSIONS



unit: mm

### ELECTRICAL SPECIFICATION

Part Number	Marking	Inductance @100KHz (uH)	Inductance Tolerance	DCR ±20% (Ω)	Rated Current (mA)		SRF (MHz) Min.
					Saturation Current Idc1	Temperature Rise Current Idc2	
CSMS0610D-1R5M-LRH	1R5	1.5	±20%	0.090	2400	1900	77
CSMS0610D-2R2M-LRH	2R2	2.2	±20%	0.110	1900	1700	56
CSMS0610D-3R3M-LRH	3R3	3.3	±20%	0.135	1600	1500	42
CSMS0610D-4R7M-LRH	4R7	4.7	±20%	0.165	1300	1400	36
CSMS0610D-6R8M-LRH	6R8	6.8	±20%	0.220	1200	1200	30
CSMS0610D-100M-LRH	100	10	±20%	0.270	1000	1100	25
CSMS0610D-220M-LRH	220	22	±20%	0.580	650	700	12

- Operating temperature Range: -25°C to +125°C (Including self-temperature rise)
- Storage Temp. Range: -40°C to +85°C
- Inductance measured using the HP4285A and Chroma1320 & 3302
- DCR measured using Chroma16502
- SRF measured using the HP4291B
- Saturation Current Idc1: The value of current causes a 30% inductance reduction from initial value.(at Ta: 20°C )
- Temperature rise current Idc2: The value of current causes a 40°C temperature rise.(at Ta: 20°C )
- Rated Current: Either Idc1 or Idc2 whichever is smaller
- MSL: Level 1

### CHARACTERISTIC CURVE

#### CSMS0610D Series

