

SPECIFICATION

Model Name(型號): EJ8951-4T

CUSTOMER(客戶):

PART NO(料號):

CUSTOMER P/N:(客戶料號):

DESCRIPTION(規格): ePaper T-CON Board

DATE(日期): 2018/09/13

CUSTOMER APPROVAL

Approved:	Confirmed:	Prepared:
-----------	------------	-----------

頤曜數位股份有限公司

eJump Inc.

TEL: +886-3-3586505

FAX: +886-3-3586513

INDEX

1. General Description

2. Dimension & Cable Connections

1. General Description

1.1 Introduction

EJ8951-4T is designed for driving Electrical Paper Display (EPD) with the following Features:

- **Support EInk 31.2"/42" EPD Panel: ED312TT2, EC312TT2, ED420TT1**
- **Two Adjustable LDOs for Source Driver Supply**
LDO1: 15 V, 2000 mA at VIN=12 V (VPOS)
LDO2: -15 V, 800 mA at VIN=12 V (VNEG)
- **Two Charge Pumps for Gate Driver Supply**
CP1: 22 V, 2000 mA (VDDH)
CP2: -20 V, 600 mA, (VEE)
- **Adjustable VCOM Driver for Accurate Panel Backplane Biasing**
0 V to -5.11 V
- **External IO**
USB X 1, used for Display Data Transfer
SPI X 1, used for Display Data Transfer
DC In 12V X 1

1.2 Electrical Characteristics

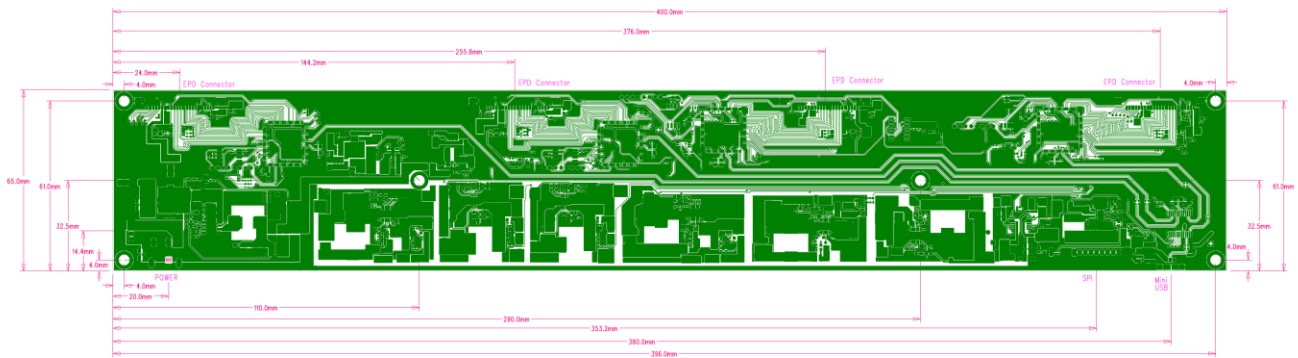
Item	Symbol	Min	Max	I
Power Supply	Vs		12V	
Panel Power	LDO1	+14.25V	+15.0V	2000mA
	LDO2	-15.0V	-14.25V	800mA
	VCOM	-3.00V	0V	1700mA
	CP1	+21.0V	+23.0V	2000mA
	CP2	-21.0V	-19.0V	600mA

1.3 Power Consumption

Item	Min	Max	Unit
T-CON Board only		13.3	W
Standby		1.2	W

2. Dimension & Cable Connection

2.1 Dimension: 400.0mm (L) *65.0 mm (W)



2.2 Pin Description

Panel OUT P-TWO 196033-50041 compatible(50) (CON2 / CON3 / CON8 / CON9)

Pin #	Signal	Description
1	VGL	Negative power supply gate driver
2	NC	No Connection
3	VGH	Positive power supply gate driver
4	Mode2	Output mode selection gate driver
5	VDD	Digital power supply drivers
6	Mode1	Output mode selection gate driver
7	CKV	Clock gate driver
8	STV	Start pulse gate driver
9	VSS	Ground
10	VCOM_TFT	Common voltage
11	VDD	Digital power supply drivers
12	VSS	Ground
13	XCL	Clock source driver

14	D0	Data signal source driver
15	D1	Data signal source driver
16	D2	Data signal source driver
17	D3	Data signal source driver
18	D4	Data signal source driver
19	D5	Data signal source driver
20	D6	Data signal source driver
21	D7	Data signal source driver
22	VSS	Ground
23	D8	Data signal source driver
24	D9	Data signal source driver
25	D10	Data signal source driver
26	D11	Data signal source driver
27	D12	Data signal source driver
28	D13	Data signal source driver
29	D14	Data signal source driver
30	D15	Data signal source driver
31	XSTL	Start pulse source driver
32	XLE	Latch enable source driver
33	XOE	Output enable source driver
34	ISEL	L: input data bus width is 8-bit, i.e., D7 ~ D0 are valid
35	NC	No Connection
36	VPOS	Positive power supply source driver
37	NC	No Connection
38	VNEG	Negative power supply source driver
39	VCOM_FPL	Common Voltage
40	NC	No Connection
41	STV2	Start pulse gate driver 2
42	G640	Detect IC function
43	S400	Detect IC function
44	S320	Detect IC function
45	NC	No Connection
46	G640	Detect IC function
47	S400	Detect IC function
48	S320	Detect IC function

49	NC	No Connection
50	STL2	Data shift start pulse 2

USB (CON1)

Micro USB

PIN	FUNCTION
1	+5V
2	D+
3	D-
4	GND

SPI (J5)

WAFER 9pin pitch2.0mm

PIN	FUNCTION
1	SPI_CS1#
2	SPI_CS2#
3	SPI_CS3#
4	SPI_CS4#
5	SCK
6	MOSI
7	MISO
8	MOST_HRDY
9	GND

DC12V Input (J1)

DC Jack 5.5mm / 2.5mm

PIN	FUNCTION
1	DV 12V
2	GND