

AC Filter, hohe symmetrische Dämpfung

new



### Beschreibung

- Chassis:
  - Schraubbefestigung, von oben
- Netzfilter in Standard-Version, 1-stufig, hohe Dämpfung
- Hohe symmetrische Einfügungsdämpfung im Frequenzbereich von 10kHz bis 30 MHz

### Alleinstellungsmerkmale

- Exzellente symmetrische Dämpfung
- Kompakt und kostenoptimiert
- Rundum geschlossenes Stahlgehäuse
- Litzenanschlüsse optional

### Zulassungen

- VDE Ausweisnummer: 40041643
- UL Ausweisnummer: E72928

### Merkmale

- Kompaktes Filter mit hoher symmetrischer Dämpfung
- Ausgelegt für universelle Industrie-Anwendungen
- Speziell für Anwendungen mit hohen symmetrischen Störungen verursacht durch schaltende Halbleiter
- Geeignet für den Einsatz in Geräten nach IEC/UL 60950
- Geeignet für den Einsatz in Medizinalgeräten nach IEC/UL 60601-1

### Weitere Ausführungen auf Anfrage

- Version mit Litzenanschlüssen

### Weblinks

[pdf-Datenblatt](#), [html-Datenblatt](#), [Allgemeine Produktinformationen](#), [Zulassungen](#), [CE-Konformitätserklärung](#), [RoHS](#), [CHINA-RoHS](#), [REACH](#), [e-Shop](#), [SCHURTER-Stock-Check](#), [Distributor-Stock-Check](#), [Detailanfrage zu Typ](#)

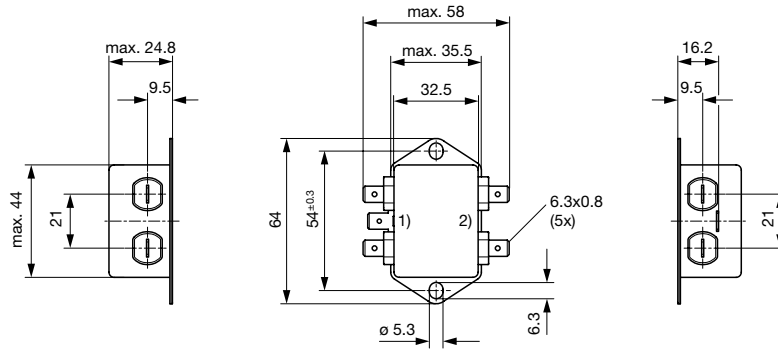
### Technische Daten

|                         |   |
|-------------------------|---|
| Nenndaten IEC           | 1 - 60A @ Tu 40 °C / 250 VAC; 50Hz  |
| Nenndaten UL/CSA        | 1 - 60A @ Tu 40 °C / 125/250 VAC;<br>60Hz                                     |
| Ableitstrom             | industriell < 1 mA (250V / 60Hz)  |
| Spannungsfestigkeit     | > 1.7 kVDC zwischen L-N<br>> 2.7 kVDC zwischen L/N-PE<br>Prüfspannung (2 sec) |
| Zulässige Betriebstemp. | -40 °C bis 100 °C   |
| Klimakategorie          | 40/100/21 gemäss IEC 60068-1  |
| Schutzklasse            | Geeignet für Geräte der Schutzklasse I<br>gemäss IEC 61140                    |
| Anschluss               | Steckanschluss 6.3 x 0.8 mm<br>Schraubanschluss                               |
| Material: Gehäuse       | Metall  |

|            |   |
|------------|---|
| Netzfilter | Standard-, Medizinal- und Industriever-<br>sion, IEC 60939, UL 1283, CSA C22.2<br>no. 8<br><a href="#">Technische Details</a> |
| MTBF       | > 200'000h gemäss MIL-HB-217 F  |

## Abmessung

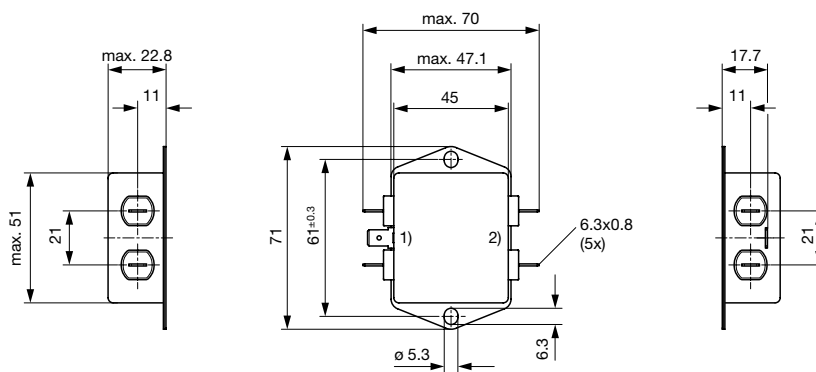
Gehäuse PG mit Steckanschlüssen



1) Netz

2) Last

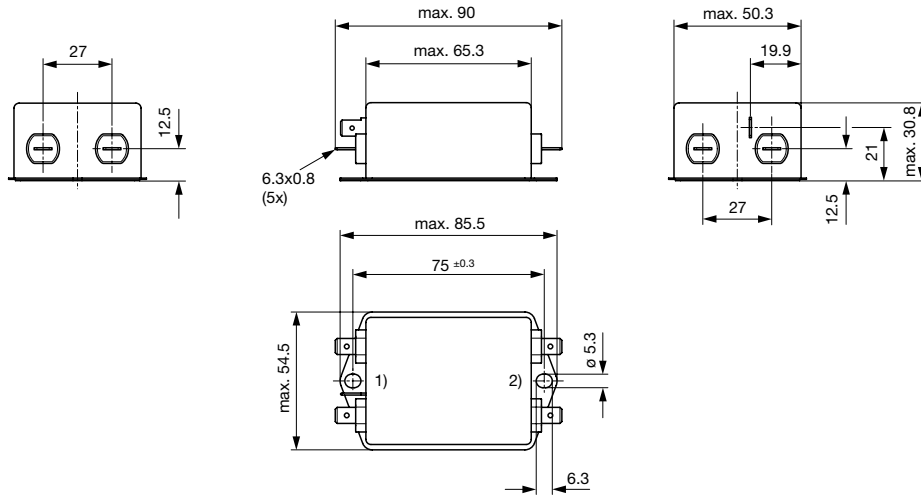
Gehäuse PH mit Steckanschlüssen



1) Netz

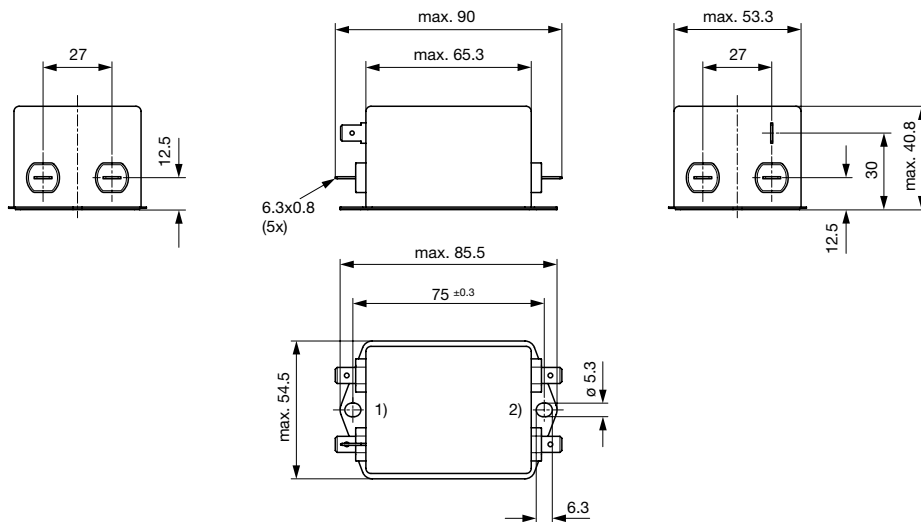
2) Last

Gehäuse PI mit Steckanschlüssen



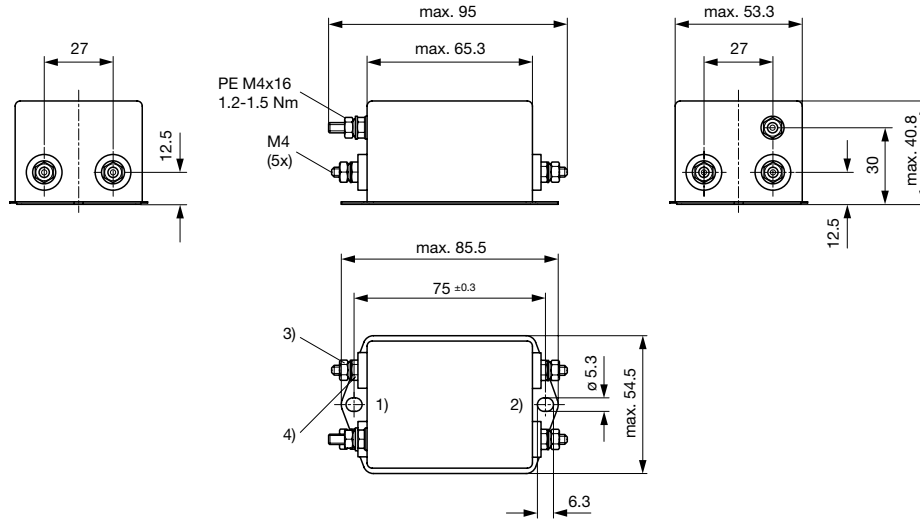
- 1) Netz
- 2) Last

Gehäuse PK mit Steckanschlüssen



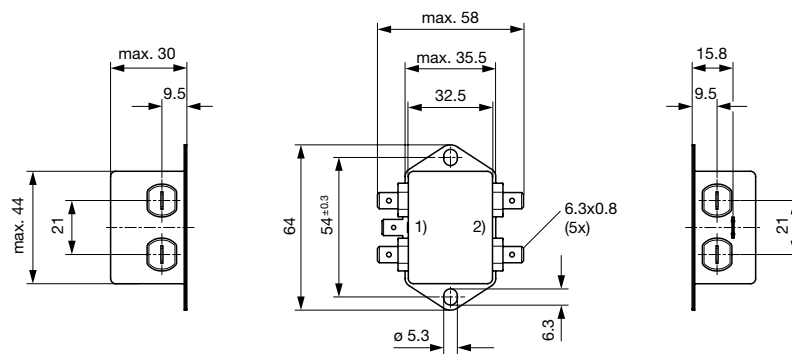
- 1) Netz
- 2) Last

## Gehäuse PK mit Schraubanschlüssen



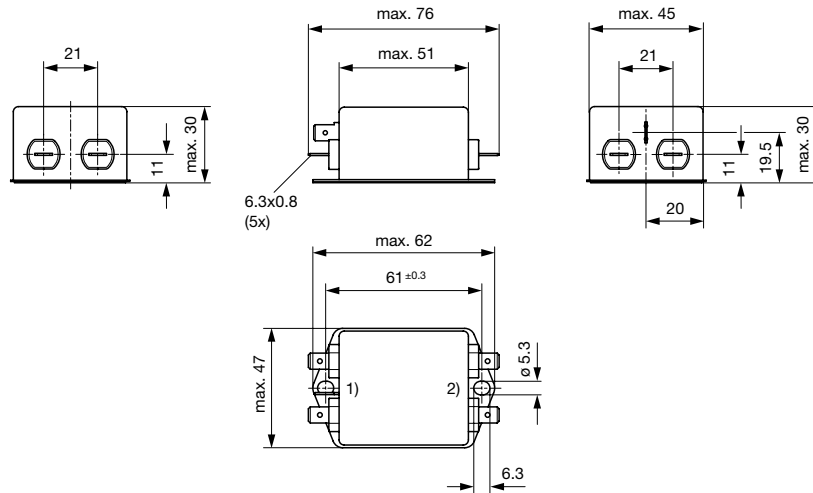
- 1) Netz
- 2) Last
- 3) Anziehdrehmoment 0.8...1 Nm, Kontermutter festhalten
- 4) Kontermutter nicht lösen

## Gehäuse QC mit Steckanschlüssen



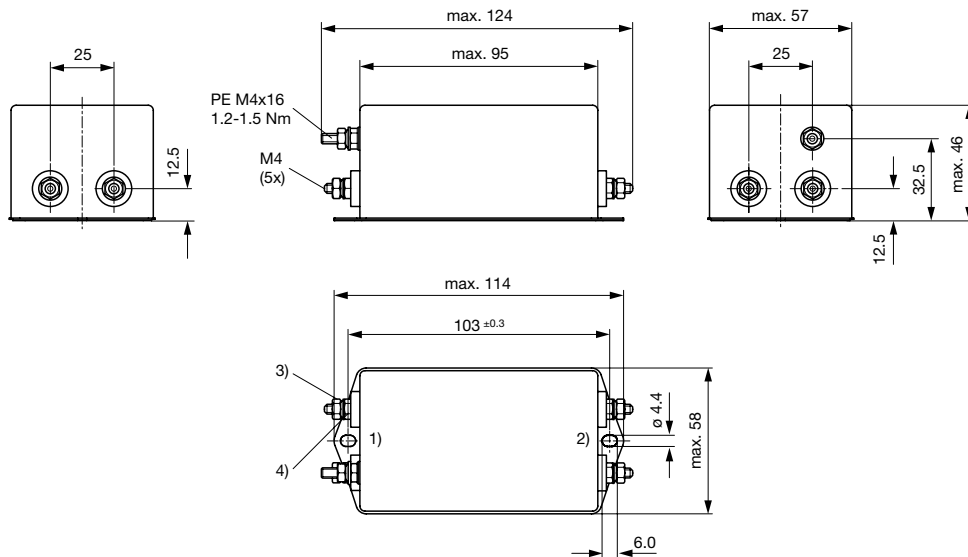
- 1) Netz
- 2) Last

Gehäuse QD mit Steckanschlüssen



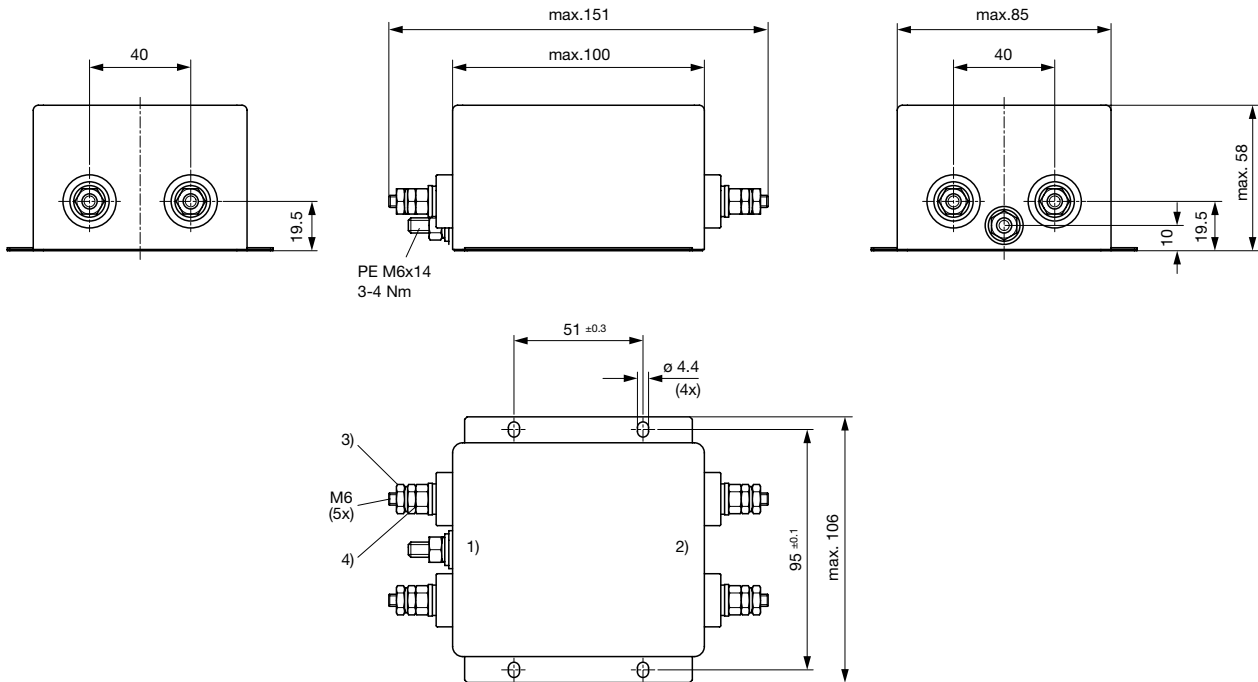
- 1) Netz
- 2) Last

Gehäuse QE mit Schraubanschlüssen



- 1) Netz
- 2) Last
- 3) Anziehdrehmoment 0.8...1 Nm, Kontermutter festhalten
- 4) Kontermutter nicht lösen

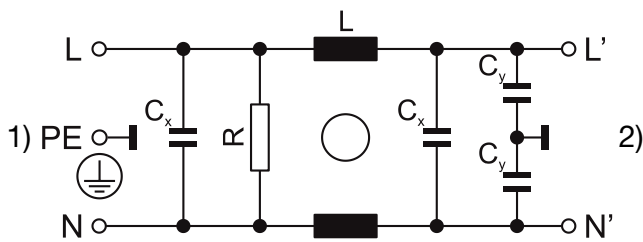
## Gehäuse QF mit Schraubanschlüssen



- 1) Netz
- 2) Last
- 3) Anziehdrehmoment 3...4 Nm, Kontermutter festhalten
- 4) Kontermutter nicht lösen

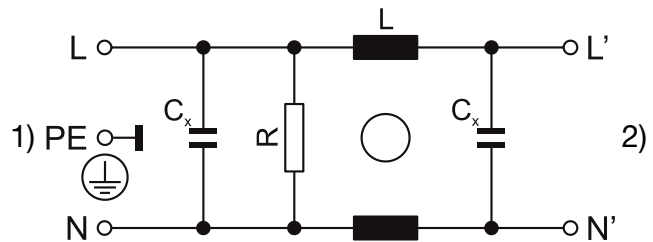
## Schaltbilder

Standard Version  
Design N, P



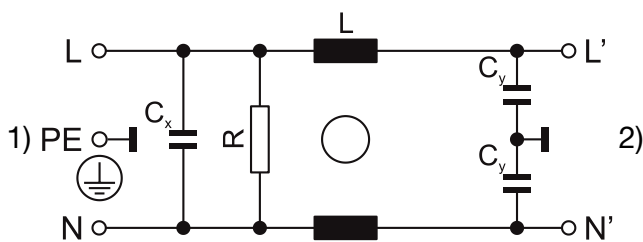
- 1) Netz
- 2) Last

Medizinal Version M5  
Design N, P



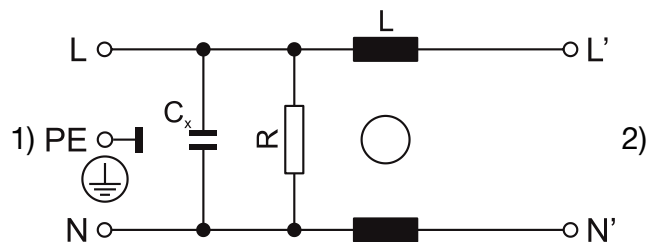
- 1) Netz
- 2) Last

Standard Version  
Design Q



- 1) Netz
- 2) Last

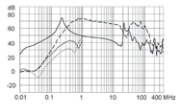
Medizinal Version M5  
Design Q



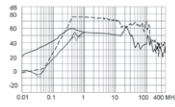
- 1) Netz
- 2) Last

**Einfügungsdämpfungen** . . . . . 0.1/100Ω symmetrisch ..... 100/0.1Ω symmetrisch - - - - 50Ω symmetrisch \_\_\_\_ 50Ω asymmetrisch  
 Standard Version

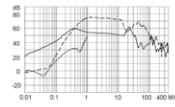
1 A / Design N



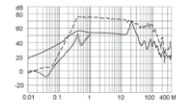
3 A / Design N



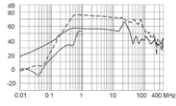
4 A / Design N



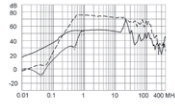
6 A / Design N



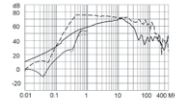
8 A / Design N



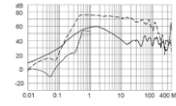
10 A / Design N



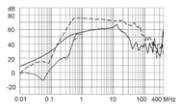
12 A / Design N



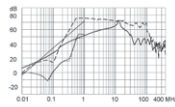
16 A / Design N



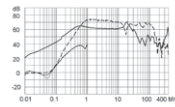
20 A / Design N



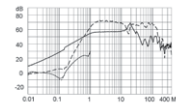
30 A / Design N



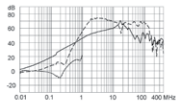
1 A / Design P



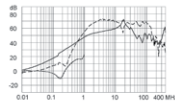
3 A / Design P



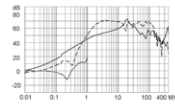
6 A / Design P



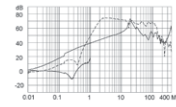
10 A / Design P



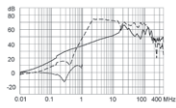
12 A / Design P



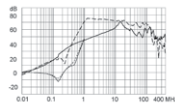
16 A / Design P



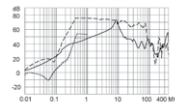
20 A / Design P



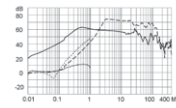
30 A / Design P



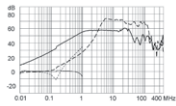
60 A / Design P



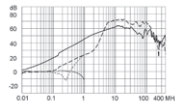
1 A / Design Q



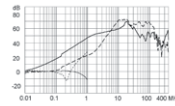
3 A / Design Q



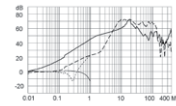
6 A / Design Q



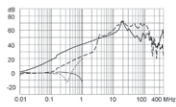
10 A / Design Q



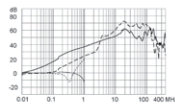
12 A / Design Q



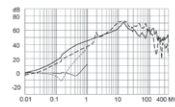
16 A / Design Q



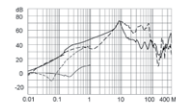
20 A / Design Q



30 A / Design Q

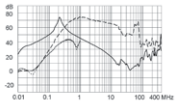


60 A / Design Q

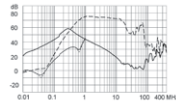


Medizinal Version (M5)

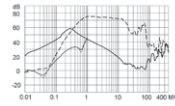
1 A / Design N



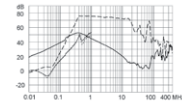
3 A / Design N



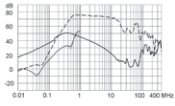
4 A / Design N



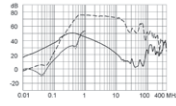
6 A / Design N



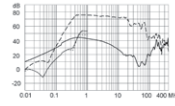
8 A / Design N



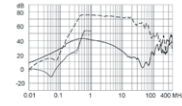
10 A / Design N



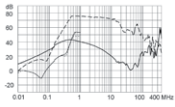
12 A / Design N



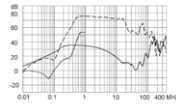
16 A / Design N



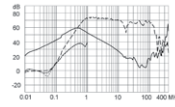
20 A / Design N



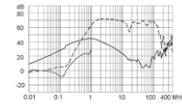
30 A / Design N



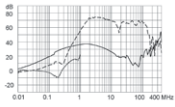
1 A / Design P



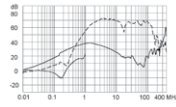
3 A / Design P



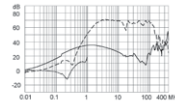
6 A / Design P



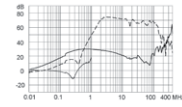
10 A / Design P



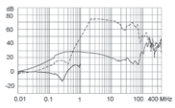
12 A / Design P



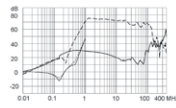
16 A / Design P



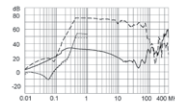
20 A / Design P



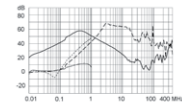
30 A / Design P



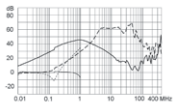
60 A / Design P



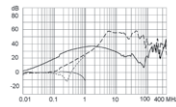
1 A / Design Q



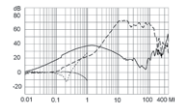
3 A / Design Q



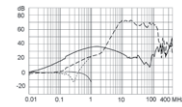
6 A / Design Q



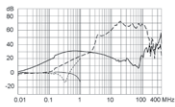
10 A / Design Q



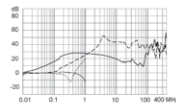
12 A / Design Q



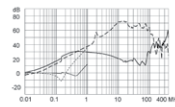
16 A / Design Q



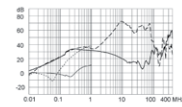
20 A / Design Q



30 A / Design Q



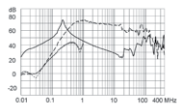
60 A / Design Q



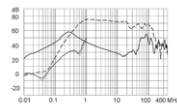


Medizinal Version (M80)

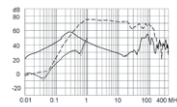
1 A / Design N



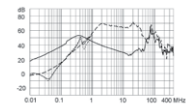
3 A / Design N



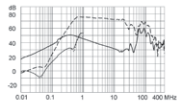
4 A / Design N



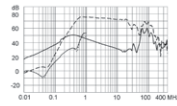
6 A / Design N



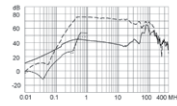
8 A / Design N



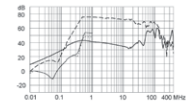
10 A / Design N



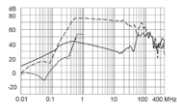
12 A / Design N



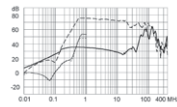
16 A / Design N



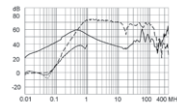
20 A / Design N



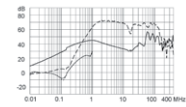
30 A / Design N



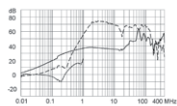
1 A / Design P



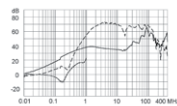
3 A / Design P



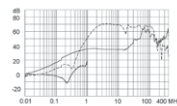
6 A / Design P



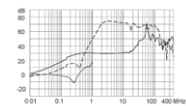
10 A / Design P



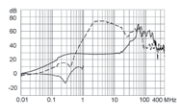
12 A / Design P



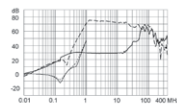
16 A / Design P



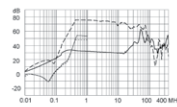
20 A / Design P



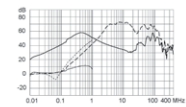
30 A / Design P



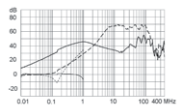
60 A / Design P



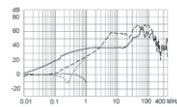
1 A / Design Q



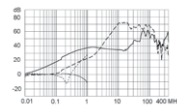
3 A / Design Q



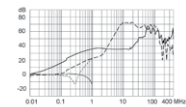
6 A / Design Q



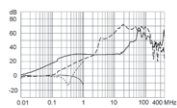
10 A / Design Q



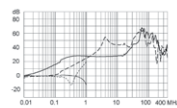
12 A / Design Q



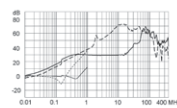
16 A / Design Q



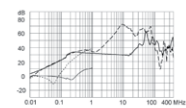
20 A / Design Q



30 A / Design Q



60 A / Design Q



### Alle Varianten

| Nennstrom | Filter-Typ       | Anschluss                   | Design | Ableitstrom | Ri   | Verlustleistung | Gewicht | Gehäuse | Verpackung | Bestell-Nummer               |
|-----------|------------------|-----------------------------|--------|-------------|------|-----------------|---------|---------|------------|------------------------------|
| [A]       |                  |                             |        | [mA]        | [mΩ] | [W]             | [g]     |         | [ST]       |                              |
| 1         | Standard Version | Steckanschluss 6.3 x 0.8 mm | N      | 0.5         | 475  | 1               | 72 g    | PG      | 15         | <a href="#">5500.2630.01</a> |
| 3         | Standard Version | Steckanschluss 6.3 x 0.8 mm | N      | 0.5         | 83   | 1.5             | 104 g   | PH      | 15         | <a href="#">5500.2631.01</a> |
| 4         | Standard Version | Steckanschluss 6.3 x 0.8 mm | N      | 0.5         | 53   | 1.7             | 108 g   | PH      | 15         | <a href="#">5500.2632.01</a> |
| 6         | Standard Version | Steckanschluss 6.3 x 0.8 mm | N      | 0.5         | 32.5 | 2.4             | 109 g   | PH      | 15         | <a href="#">5500.2633.01</a> |
| 8         | Standard Version | Steckanschluss 6.3 x 0.8 mm | N      | 0.5         | 29.2 | 3.8             | 190 g   | PI      | 10         | <a href="#">5500.2634.01</a> |
| 1         | Standard Version | Steckanschluss 6.3 x 0.8 mm | P      | 0.5         | 320  | 0.65            | 80 g    | QC      | 15         | <a href="#">5500.2640.01</a> |
| 3         | Standard Version | Steckanschluss 6.3 x 0.8 mm | P      | 0.5         | 36   | 0.65            | 81 g    | QC      | 15         | <a href="#">5500.2641.01</a> |
| 6         | Standard Version | Steckanschluss 6.3 x 0.8 mm | P      | 0.5         | 12   | 0.86            | 80 g    | QC      | 15         | <a href="#">5500.2642.01</a> |
| 10        | Standard Version | Steckanschluss 6.3 x 0.8 mm | P      | 0.5         | 5    | 1               | 87 g    | QC      | 15         | <a href="#">5500.2643.01</a> |
| 12        | Standard Version | Steckanschluss 6.3 x 0.8 mm | P      | 0.5         | 4    | 1.2             | 92 g    | QC      | 15         | <a href="#">5500.2644.01</a> |
| 16        | Standard Version | Steckanschluss 6.3 x 0.8 mm | P      | 0.5         | 2    | 1               | 138 g   | QD      | 15         | <a href="#">5500.2645.01</a> |

| Nennstrom | Filter-Typ        | Anschluss                   | Design | Ableitstrom | Ri   | Verlustleistung | Gewicht | Gehäuse | Verpackung | Bestell-Nummer |
|-----------|-------------------|-----------------------------|--------|-------------|------|-----------------|---------|---------|------------|----------------|
| [A]       |                   |                             |        | [mA]        | [mΩ] | [W]             | [g]     |         | [ST]       |                |
| 20        | Standard Version  | Steckanschluss 6.3 x 0.8 mm | P      | 0.5         | 1.9  | 1.5             | 206 g   | PI      | 10         | 5500.2646.01   |
| 1         | Standard Version  | Steckanschluss 6.3 x 0.8 mm | Q      | 0.5         | 320  | 0.65            | 66 g    | PG      | 15         | 5500.2650.01   |
| 3         | Standard Version  | Steckanschluss 6.3 x 0.8 mm | Q      | 0.5         | 36   | 0.65            | 70 g    | PG      | 15         | 5500.2651.01   |
| 6         | Standard Version  | Steckanschluss 6.3 x 0.8 mm | Q      | 0.5         | 12   | 0.86            | 100 g   | PG      | 15         | 5500.2652.01   |
| 10        | Standard Version  | Steckanschluss 6.3 x 0.8 mm | Q      | 0.5         | 5    | 1               | 90 g    | QC      | 15         | 5500.2653.01   |
| 12        | Standard Version  | Steckanschluss 6.3 x 0.8 mm | Q      | 0.5         | 4    | 1.2             | 90 g    | QC      | 15         | 5500.2654.01   |
| 16        | Standard Version  | Steckanschluss 6.3 x 0.8 mm | Q      | 0.5         | 2    | 1               | 136 g   | QD      | 15         | 5500.2655.01   |
| 20        | Standard Version  | Steckanschluss 6.3 x 0.8 mm | Q      | 0.5         | 1.9  | 1.5             | 204 g   | PI      | 10         | 5500.2656.01   |
| 10        | Industrie Version | Steckanschluss 6.3 x 0.8 mm | N      | 1           | 22.8 | 4.6             | 200 g   | PI      | 10         | 5500.2635.01   |
| 12        | Industrie Version | Steckanschluss 6.3 x 0.8 mm | N      | 1           | 13.2 | 3.8             | 201 g   | PI      | 10         | 5500.2636.01   |
| 16        | Industrie Version | Steckanschluss 6.3 x 0.8 mm | N      | 1           | 7.2  | 3.7             | 308 g   | PK      | 10         | 5500.2637.01   |
| 20        | Industrie Version | Steckanschluss 6.3 x 0.8 mm | N      | 1           | 6.0  | 4.8             | 322 g   | PK      | 10         | 5500.2638.01   |
| 30        | Industrie Version | Schraubanschluss M4         | N      | 1           | 2.9  | 5.2             | 355 g   | PK      | 10         | 5500.2639.03   |
| 30        | Industrie Version | Schraubanschluss M4         | P      | 1           | 1    | 1.8             | 450 g   | QE      | 5          | 5500.2647.03   |
| 60        | Industrie Version | Schraubanschluss M6         | P      | 1           | 1    | 7.2             | 1220 g  | QF      | 1          | 5500.2648.03   |
| 30        | Industrie Version | Schraubanschluss M4         | Q      | 1           | 1    | 1.8             | 450 g   | QE      | 5          | 5500.2657.03   |
| 60        | Industrie Version | Schraubanschluss M6         | Q      | 1           | 1    | 7.2             | 1220 g  | QF      | 1          | 5500.2658.03   |
| 1         | Medizinal (M5)    | Steckanschluss 6.3 x 0.8 mm | N      | 0.005       | 475  | 1               | 72 g    | PG      | 15         | 5500.2630.04   |
| 3         | Medizinal (M5)    | Steckanschluss 6.3 x 0.8 mm | N      | 0.005       | 83   | 1.5             | 104 g   | PH      | 15         | 5500.2631.04   |
| 4         | Medizinal (M5)    | Steckanschluss 6.3 x 0.8 mm | N      | 0.005       | 53   | 1.7             | 108 g   | PH      | 15         | 5500.2632.04   |
| 6         | Medizinal (M5)    | Steckanschluss 6.3 x 0.8 mm | N      | 0.005       | 32.5 | 2.4             | 109 g   | PH      | 15         | 5500.2633.04   |
| 8         | Medizinal (M5)    | Steckanschluss 6.3 x 0.8 mm | N      | 0.005       | 29.2 | 3.8             | 190 g   | PI      | 10         | 5500.2634.04   |
| 10        | Medizinal (M5)    | Steckanschluss 6.3 x 0.8 mm | N      | 0.005       | 22.8 | 4.6             | 200 g   | PI      | 10         | 5500.2635.04   |
| 12        | Medizinal (M5)    | Steckanschluss 6.3 x 0.8 mm | N      | 0.005       | 13.2 | 3.8             | 201 g   | PI      | 10         | 5500.2636.04   |
| 16        | Medizinal (M5)    | Steckanschluss 6.3 x 0.8 mm | N      | 0.005       | 7.2  | 3.7             | 308 g   | PK      | 10         | 5500.2637.04   |
| 20        | Medizinal (M5)    | Steckanschluss 6.3 x 0.8 mm | N      | 0.005       | 6.0  | 4.8             | 322 g   | PK      | 10         | 5500.2638.04   |
| 30        | Medizinal (M5)    | Schraubanschluss M4         | N      | 0.005       | 2.9  | 5.2             | 355 g   | PK      | 10         | 5500.2639.06   |
| 1         | Medizinal (M5)    | Steckanschluss 6.3 x 0.8 mm | P      | 0.005       | 320  | 0.65            | 80 g    | QC      | 15         | 5500.2640.04   |
| 3         | Medizinal (M5)    | Steckanschluss 6.3 x 0.8 mm | P      | 0.005       | 36   | 0.65            | 81 g    | QC      | 15         | 5500.2641.04   |
| 6         | Medizinal (M5)    | Steckanschluss 6.3 x 0.8 mm | P      | 0.005       | 12   | 0.86            | 80 g    | QC      | 15         | 5500.2642.04   |
| 10        | Medizinal (M5)    | Steckanschluss 6.3 x 0.8 mm | P      | 0.005       | 5    | 1               | 87 g    | QC      | 15         | 5500.2643.04   |
| 12        | Medizinal (M5)    | Steckanschluss 6.3 x 0.8 mm | P      | 0.005       | 4    | 1.2             | 92 g    | QC      | 15         | 5500.2644.04   |
| 16        | Medizinal (M5)    | Steckanschluss 6.3 x 0.8 mm | P      | 0.005       | 2    | 1               | 138 g   | QD      | 15         | 5500.2645.04   |
| 20        | Medizinal (M5)    | Steckanschluss 6.3 x 0.8 mm | P      | 0.005       | 1.9  | 1.5             | 206 g   | PI      | 10         | 5500.2646.04   |
| 30        | Medizinal (M5)    | Schraubanschluss M4         | P      | 0.005       | 1    | 1.8             | 450 g   | QE      | 5          | 5500.2647.06   |
| 60        | Medizinal (M5)    | Schraubanschluss M6         | P      | 0.005       | 1    | 7.2             | 1220 g  | QF      | 1          | 5500.2648.06   |
| 1         | Medizinal (M5)    | Steckanschluss 6.3 x 0.8 mm | Q      | 0.005       | 320  | 0.65            | 66 g    | PG      | 15         | 5500.2650.04   |
| 3         | Medizinal (M5)    | Steckanschluss 6.3 x 0.8 mm | Q      | 0.005       | 36   | 0.65            | 70 g    | PG      | 15         | 5500.2651.04   |
| 6         | Medizinal (M5)    | Steckanschluss 6.3 x 0.8 mm | Q      | 0.005       | 12   | 0.86            | 100 g   | PG      | 15         | 5500.2652.04   |
| 10        | Medizinal (M5)    | Steckanschluss 6.3 x 0.8 mm | Q      | 0.005       | 5    | 1               | 90 g    | QC      | 15         | 5500.2653.04   |
| 12        | Medizinal (M5)    | Steckanschluss 6.3 x 0.8 mm | Q      | 0.005       | 4    | 1.2             | 90 g    | QC      | 15         | 5500.2654.04   |
| 16        | Medizinal (M5)    | Steckanschluss 6.3 x 0.8 mm | Q      | 0.005       | 2    | 1               | 136 g   | QD      | 15         | 5500.2655.04   |
| 20        | Medizinal (M5)    | Steckanschluss 6.3 x 0.8 mm | Q      | 0.005       | 1.9  | 1.5             | 204 g   | PI      | 10         | 5500.2656.04   |
| 30        | Medizinal (M5)    | Schraubanschluss M4         | Q      | 0.005       | 1    | 1.8             | 450 g   | QE      | 5          | 5500.2657.06   |
| 60        | Medizinal (M5)    | Schraubanschluss M6         | Q      | 0.005       | 1    | 7.2             | 1220 g  | QF      | 1          | 5500.2658.06   |
| 1         | Medizinal (M80)   | Steckanschluss 6.3 x 0.8 mm | N      | 0.08        | 475  | 1               | 72 g    | PG      | 15         | 5500.2630.07   |
| 3         | Medizinal (M80)   | Steckanschluss 6.3 x 0.8 mm | N      | 0.08        | 83   | 1.5             | 104 g   | PH      | 15         | 5500.2631.07   |
| 4         | Medizinal (M80)   | Steckanschluss 6.3 x 0.8 mm | N      | 0.08        | 53   | 1.7             | 108 g   | PH      | 15         | 5500.2632.07   |
| 6         | Medizinal (M80)   | Steckanschluss 6.3 x 0.8 mm | N      | 0.08        | 32.5 | 2.4             | 109 g   | PH      | 15         | 5500.2633.07   |
| 8         | Medizinal (M80)   | Steckanschluss 6.3 x 0.8 mm | N      | 0.08        | 29.2 | 3.8             | 190 g   | PI      | 10         | 5500.2634.07   |
| 10        | Medizinal (M80)   | Steckanschluss 6.3 x 0.8 mm | N      | 0.08        | 22.8 | 4.6             | 200 g   | PI      | 10         | 5500.2635.07   |
| 12        | Medizinal (M80)   | Steckanschluss 6.3 x 0.8 mm | N      | 0.08        | 13.2 | 3.8             | 201 g   | PI      | 10         | 5500.2636.07   |
| 16        | Medizinal (M80)   | Steckanschluss 6.3 x 0.8 mm | N      | 0.08        | 7.2  | 3.7             | 308 g   | PK      | 10         | 5500.2637.07   |
| 20        | Medizinal (M80)   | Steckanschluss 6.3 x 0.8 mm | N      | 0.08        | 6.0  | 4.8             | 322 g   | PK      | 10         | 5500.2638.07   |

| Nennstrom<br>[A] | Filter-Typ      | Anschluss                   | Design | Ableitstrom<br>[mA] | Ri<br>[mΩ] | Verlustleistung<br>[W] | Gewicht<br>[g] | Gehäuse | Verpackung<br>[ST] | Bestell-Nummer |
|------------------|-----------------|-----------------------------|--------|---------------------|------------|------------------------|----------------|---------|--------------------|----------------|
| 30               | Medizinal (M80) | Schraubanschluss M4         | N      | 0.08                | 2.9        | 5.2                    | 355 g          | PK      | 10                 | 5500.2639.09   |
| 1                | Medizinal (M80) | Steckanschluss 6.3 x 0.8 mm | P      | 0.08                | 320        | 0.65                   | 80 g           | QC      | 15                 | 5500.2640.07   |
| 3                | Medizinal (M80) | Steckanschluss 6.3 x 0.8 mm | P      | 0.08                | 36         | 0.65                   | 81 g           | QC      | 15                 | 5500.2641.07   |
| 6                | Medizinal (M80) | Steckanschluss 6.3 x 0.8 mm | P      | 0.08                | 12         | 0.86                   | 80 g           | QC      | 15                 | 5500.2642.07   |
| 10               | Medizinal (M80) | Steckanschluss 6.3 x 0.8 mm | P      | 0.08                | 5          | 1                      | 87 g           | QC      | 15                 | 5500.2643.07   |
| 12               | Medizinal (M80) | Steckanschluss 6.3 x 0.8 mm | P      | 0.08                | 4          | 1.2                    | 92 g           | QC      | 15                 | 5500.2644.07   |
| 16               | Medizinal (M80) | Steckanschluss 6.3 x 0.8 mm | P      | 0.08                | 2          | 1                      | 138 g          | QD      | 15                 | 5500.2645.07   |
| 20               | Medizinal (M80) | Steckanschluss 6.3 x 0.8 mm | P      | 0.08                | 1.9        | 1.5                    | 206 g          | PI      | 10                 | 5500.2646.07   |
| 30               | Medizinal (M80) | Schraubanschluss M4         | P      | 0.08                | 1          | 1.8                    | 450 g          | QE      | 5                  | 5500.2647.09   |
| 60               | Medizinal (M80) | Schraubanschluss M6         | P      | 0.08                | 1          | 7.2                    | 1220 g         | QF      | 1                  | 5500.2648.09   |
| 1                | Medizinal (M80) | Steckanschluss 6.3 x 0.8 mm | Q      | 0.08                | 320        | 0.65                   | 66 g           | PG      | 15                 | 5500.2650.07   |
| 3                | Medizinal (M80) | Steckanschluss 6.3 x 0.8 mm | Q      | 0.08                | 36         | 0.65                   | 70 g           | PG      | 15                 | 5500.2651.07   |
| 6                | Medizinal (M80) | Steckanschluss 6.3 x 0.8 mm | Q      | 0.08                | 12         | 0.86                   | 100 g          | PG      | 15                 | 5500.2652.07   |
| 10               | Medizinal (M80) | Steckanschluss 6.3 x 0.8 mm | Q      | 0.08                | 5          | 1                      | 90 g           | QC      | 15                 | 5500.2653.07   |
| 12               | Medizinal (M80) | Steckanschluss 6.3 x 0.8 mm | Q      | 0.08                | 4          | 1.2                    | 90 g           | QC      | 15                 | 5500.2654.07   |
| 16               | Medizinal (M80) | Steckanschluss 6.3 x 0.8 mm | Q      | 0.08                | 2          | 1                      | 136 g          | QD      | 15                 | 5500.2655.07   |
| 20               | Medizinal (M80) | Steckanschluss 6.3 x 0.8 mm | Q      | 0.08                | 1.9        | 1.5                    | 204 g          | PI      | 10                 | 5500.2656.07   |
| 30               | Medizinal (M80) | Schraubanschluss M4         | Q      | 0.08                | 1          | 1.8                    | 450 g          | QE      | 5                  | 5500.2657.09   |
| 60               | Medizinal (M80) | Schraubanschluss M6         | Q      | 0.08                | 1          | 7.2                    | 1220 g         | QF      | 1                  | 5500.2658.09   |

■ Oft verkauft.

Sie können die Verfügbarkeit all unserer Produkte in Echtzeit prüfen: <http://www.schurter.com/Stock-Check/Produktverfuegbarkeit-SCHURTER>