

<b>PROPRIETARY INFORMATION:</b> PROPRIETARY OF GLOBTEK, INC. ANY REPRODUCTION, DISCLOSURE OR USE OF THIS DRAWING, IN WHOLE OR IN PART, IS HEREBY PROHIBITED EXCEPT AS SPECIFIED IN WRITING BY GLOBTEK, INC.	REVISION			
	REV	DESCRIPTION	DATE	APPROVED
	A	INITIAL RELEASE, RFS. 11439, JB	06/2707	HM
	B	UPDATE SPEC., LABEL, RFS. 12155, JB	10/08/07	HM
	C	UPDATE DRAWING, CONNECTORS, LABEL, RFS. 16409, JB	06/09/09	HM



All models under this series are Certified to be in compliance with all the applicable requirements of UL60601-1 2nd Edition, CSA 22.2 No.601.1-M90 and EN 60601-1:A2. Globtek's Medical power supplies are designed to be used in applications that do not connect the output to Patient Circuits directly. The power supply can be used in systems with patient applied parts only when appropriate system level isolation is provided by the end user.

### 1. ELECTRICAL SPECIFICATIONS:



#### INPUT

INPUT VOLTAGE: 100Vac TO 240Vac  
 INPUT CURRENT: <2.5A rms AT 90VAC INPUT  
 INPUT FREQUENCY: 47HZ - 63HZ

#### OUTPUT

OUTPUT VOLTAGE:  VDC  
 OUTPUT CURRENT:  A, NO MINIMUM LOAD REQUIRED  
 RATED OUTPUT POWER:  WATTS, MAXIMUM WITH 10CFM AIR FLOW, DIRECTED TOWARD THE LONGER SIDE OF THE POWER SUPPLY

OUTPUT REGULATION: +/- 2 % MEASURED AT THE OUTPUT CONNECTOR  
 LINE VOLTAGE REGULATION: +/- 0.5 % TYPICAL MEASURED AT FULL LOAD  
 OUTPUT RIPPLE VOLTAGE (PEAK TO PEAK): +/- 1% OR 50 mV WHICHEVER IS GREATER AT NOMINAL OUTPUT VOLTAGE. MEASURED AT 20 MHz BANDWIDTH WITH 0.1µf CERAMIC CAPACITOR IN PARALLEL WITH 10 µf ELECTROLYTIC CAPACITOR CONNECTED AT THE END OF THE OUTPUT CONNECTOR.

TURN-ON/TURN-OFF OVERSHOOT: 5% MAXIMUM, 1mS TYPICAL RECOVERY TIME FOR 25% STEP LOAD  
 TURN-ON DELAY: LESS THAN 3 SECONDS, TYPICAL AT 115 V INPUT VOLTAGE  
 HOLD-UP TIME: 10 mS TYPICAL AT NOMINAL INPUT VOLTAGE AND FULL LOAD  
 INRUSH CURRENT: 30A TYPICAL AT 115Vac INPUT AND 60A TYPICAL AT 230Vac INPUT  
 SWITCHING FREQUENCY: 100KHZ TYPICAL  
 EFFICIENCY: 75% TYPICAL AT NOMINAL INPUT AND FULL LOAD  
 OUTPUT INDICATOR: GREEN LED FOR OUTPUT PRESENT

#### PROTECTION

OVER-VOLTAGE PROTECTION: OUTPUT VOLTAGE LIMITED BY CROWBAR METHOD  
 OVER-LOAD: PROTECTED, UNIT WILL AUTORECOVER UPON REMOVAL OF FAULT  
 SHORT CIRCUIT: PROTECTED, UNIT WILL AUTORECOVER UPON REMOVAL OF FAULT  
 INPUT PROTECTION: INPUT LINE AND NEUTRAL FUSING

#### SAFETY

DIELECTRIC WITHSTAND VOLTAGE: 565V Vdc FROM PRIMARY TO SECONDARY  
 EARTH LEAKAGE CURRENT: LESS THAN 300 uA at 264Vac INPUT VOLTAGE

#### APPROVALS

cUL 60601-1 (2-D EDITION), DEMKO EN 60601-1.1.A2, CB REPORT

EMI: COMPLIES WITH EN55011 CLASS B AND FCC PART 15 CLASS B WHEN TESTED WITH RESISTIVE LOAD, BOTH CONDUCTED AND RADIATED EMI.

CE MARK: TESTED TO COMPLY WITH EN61000-3-2 EN61000-3 AND EN50082-1 INCLUDING EN61000-4-2, EN61000-4-3, EN61000-4-4, EN61000-4-5, EN61000-4-6, EN61000-4-11

MTBF: 200,000 HOURS AT 25°C AMBIENT TEMPERATURE

OPERATING TEMPERATURE: 0°C TO 50°C AMBIENT TEMPERATURE

HUMIDITY: 0% TO 90% RELATIVE HUMIDITY

STORAGE TEMPERATURE: - 40°C TO 80°C

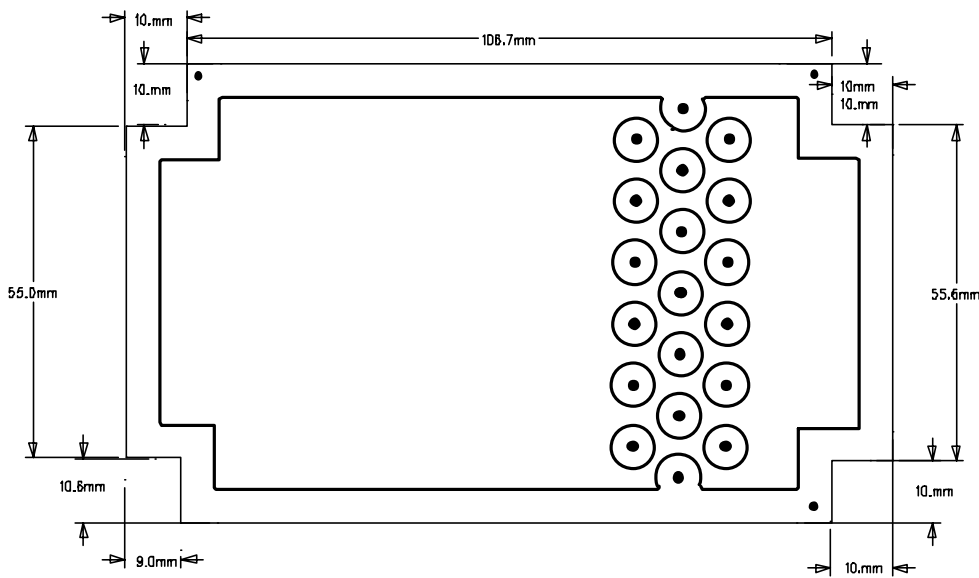
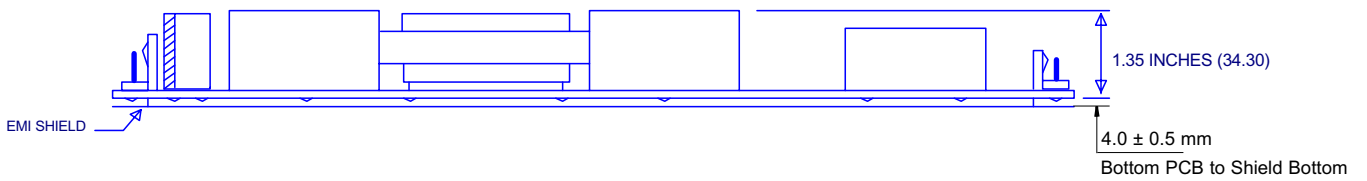
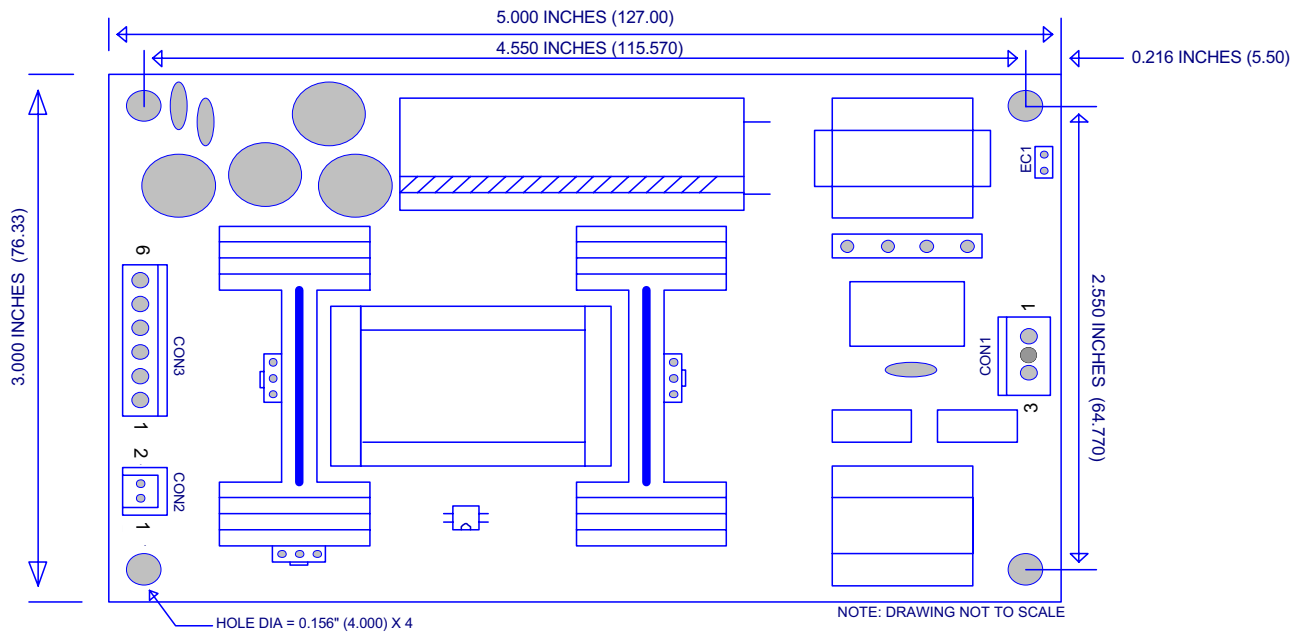
ROHS: COMPLIES WITH EU 2002/95/EC AND CHINA SJ/T 11363-2006


Foot Note: Globtek Inc. will not be liable for the safety and performance of these power supplies if unauthorized access and repair occurs. End user should consult applicable UL, CSA or EN standards for proper installation instructions  Limitation of Use: Globtek product are not authorized for use as mission critical components in life support, hazardous environment, nuclear or aircraft applications without prior written approval from the CEO of Globtek Inc.  Contents of this document are subject to change without prior notice	DASH NO.	PART NO	REV.	DESCRIPTION	NOTES	
	<b>TABULATION BLOCK</b>					
	TOLERANCES: DECIMALS    ANGULAR .xx +/- 0.1    +/- 1° .xxx +/- .005		MILLIMETERS    ANGULAR .xx +/- 0.3    +/- 1° .xxx +/- .013		<b>186 Veterans Dr. Northvale, NJ 07647</b> <b>Tel. 201-784-1000 Fax 201.784.0111</b> <b>www.globtek.com</b>	
	INIT.BY: KSK	DATE: 06/15/07	FSCN No.: G, Y	SIZE A	DWG TITLE: SWITCHER , 80WATT, <input type="checkbox"/> V@ <input type="checkbox"/> A SINGLE OUTPUT, OPEN FRAME UNIVERSAL INPUT, MEDICAL, CLASS I	
DRAWN: NF	DATE: 06/15/07	SCALE: NONE		MODEL NO: GTM2065-80 <input type="checkbox"/> -FA	REV. C	
APRVD : HM	DATE: 06/15/07	PART NO: GTM2065-80 <input type="checkbox"/> -FA(R)		SHEET 1 OF 3		

**PROPRIETARY INFORMATION:**  
 PROPRIETARY OF GLOBTEK, INC. ANY REPRODUCTION, DISCLOSURE OR USE OF THIS DRAWING, IN WHOLE OR IN PART, IS HEREBY PROHIBITED EXCEPT AS SPECIFIED IN WRITING BY GLOBTEK, INC.

**2. MECHANICAL SPECIFICATION**

SIZE: 127 x 76.33 x 34.30 mm



 <b>GlobTek, Inc.</b> www.globtek.com		186 Veterans Dr. Northvale, NJ 07647 Tel. 201-784-1000 Fax 201.784.0111	
DWG TITLE: SWITCHER, 80WATT, [ ] V@ [ ] A SINGLE OUTPUT, OPEN FRAME UNIVERSAL INPUT, MEDICAL, CLASS I			
MODEL NO: GTM2065-80 [ ] -FA			REV. C
PART NO: GTM2065-80 [ ] -FA(R)			SHEET 2 OF 3

**PROPRIETARY INFORMATION:**

PROPRIETARY OF GLOBTEK, INC. ANY REPRODUCTION, DISCLOSURE OR USE OF THIS DRAWING, IN WHOLE OR IN PART, IS HEREBY PROHIBITED EXCEPT AS SPECIFIED IN WRITING BY GLOBTEK, INC.

**3. INPUT CONNECTOR (CON 1):**

MOLEX PN: 26-60-4030 MATES W/ PN: 09-50-3031  
PIN 1: AC NEUTRAL  
PIN 2: NO CONNECTION  
PIN 3: AC LINE  
EC1: EARTH GROUND

**4. OUTPUT CONNECTOR (CON 2):**

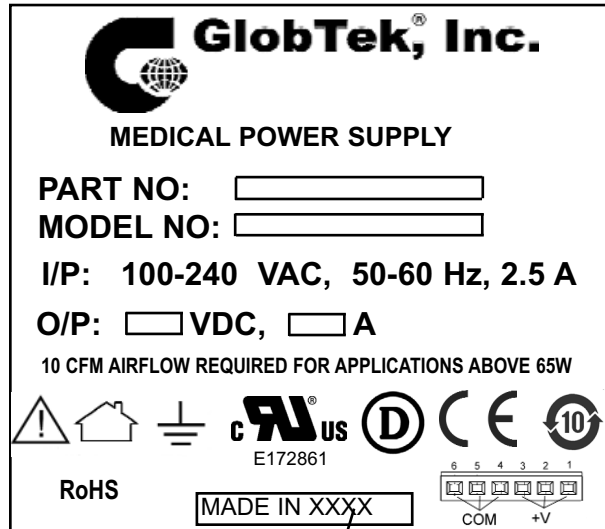
REMOTE SENSE, OPTIONAL

**5. OUTPUT CONNECTOR (CON 3):**

MOLEX 6-PIN FRICTION LOCK HEADER  
MOLEX PN: 26-60-4060 MATES WITH PN: 09-50-3061  
PIN 1,2,3: V+  
PIN 4,5,6: COM

**6. LABEL:**

MATERIAL: .007 (0.18) THICK FLAT THERMAL TRANSFER, IMPRINTABLE, WHITE OR GRAY POLYESTER SHEET WITH BLACK NOMENCLATURE.  
MANUFACTURER: STEVEN LABEL, MATERIAL I.D. NO.3302-33, UL FILE NO. MH12821(N), UL MATERIAL DESIGNATION FILE NO. GHW332RL.  
OPTIONAL LABEL MATERIAL CAN BE SUBSTITUTED PROVIDING MATERIAL IS UL LISTED AND COMPLIES WITH APPLICABLE SAFETY REQUIREMENTS.

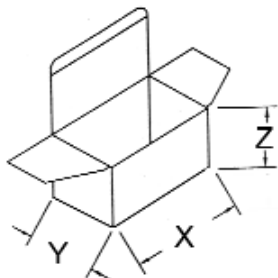


XXXX - USA OR CHINA

**ACTUAL POSITIONING OF SYMBOLS AND TEXT IS SUBJECT TO CHANGE AT TIME OF MANUFACTURE**

**7. INDIVIDUAL PACKING BOX:**

MATERIAL: CORRUGATED FIBERBOARD, F-FLUTE 0.8 (2.0) THICK, DOUBLE WALL CONSTRUCTION.  
EXTERNAL FINISH: WHITE, COATED WITH GLOSS FINISH (AQUEOUS OR VARNISH) STYLE: TUCK SIDES WITH LOCKING TABS ON BOTH SIDES OF BOX. NO PRINTING ON THE OUTSIDE OF BOX.



X = 132 mm  
Y = 92 mm  
Z = 52 mm

**POWER SUPPLY WILL BE INSIDE PLASTIC BAG**

<b>GlobTek, Inc.</b> <a href="http://www.globtek.com">www.globtek.com</a>		186 Veterans Dr. Northvale, NJ 07647 Tel. 201-784-1000 Fax 201.784.0111
DWG TITLE: SWITCHER , 80WATT, [ ]V@[ ]A SINGLE OUTPUT, OPEN FRAME UNIVERSAL INPUT, MEDICAL, CLASS I		
MODEL NO:	GTM2065-80 [ ]-FA	REV. C
PART NO:	GTM2065-80 [ ]-FA(R)	SHEET 3 OF 3