

PROPRIETARY INFORMATION: PROPRIETARY OF GLOBTEK, INC. ANY REPRODUCTION, DISCLOSURE OR USE OF THIS DRAWING, IN WHOLE OR IN PART, IS HEREBY PROHIBITED EXCEPT AS SPECIFIED IN WRITING BY GLOBTEK, INC.	REVISION			
	REV	DESCRIPTION	DATE	APPROVED
	A	INITIAL RELEASE, RFS. 12048, KT	09/021/07	HM
	B	UPDATE O/P CURRENT, RFS. 12184, KT	10/10/07	HM
	C	UPDATE TITLE BLOCK, RFS. 13738, KT	05/27/08	HM

1. ELECTRICAL SPECIFICATIONS:



INPUT

INPUT VOLTAGE: 100Vac TO 240Vac
 INPUT CURRENT: <1.5A rms AT 90VAC INPUT
 INPUT FREQUENCY: 47HZ - 63HZ

OUTPUT :

OUTPUT VOLTAGE: 24 VDC
 OUTPUT CURRENT: 2.71 A, NO LOAD TO FULL LOAD, NO MINIMUM LOAD REQUIRED
 RATED OUTPUT POWER: 65 WATTS, MAXIMUM
 OUTPUT REGULATION: +/- 2 % MEASURED AT THE OUTPUT CONNECTOR
 LINE VOLTAGE REGULATION: +/- 0.5 % TYPICAL MEASURED AT FULL LOAD
 HIGH FREQ. OUTPUT RIPPLE: 1% OF OUTPUT VOLTAGE , PEAK TO PEAK, TYPICAL AT NOMINAL LINE
 TURN-ON/TURN-OFF OVERSHOOT: 5% MAXIMUM, 1mS TYPICAL RECOVERY TIME FOR 25% STEP LOAD
 TURN-ON DELAY: 1 SECOND, TYPICAL AT 115 V INPUT VOLTAGE
 HOLD-UP TIME: 12 mS TYPICAL AT NOMINAL INPUT VOLTAGE AND FULL LOAD
 INRUSH CURRENT: 20A TYPICAL AT 115Vac INPUT AND 40A TYPICAL AT 230Vac INPUT
 SWITCHING FREQUENCY: 100KHZ TYPICAL, FIXED FREQUENCY
 EFFICIENCY: 75% TYPICAL AT NOMINAL INPUT AND FULL LOAD
 OUTPUT INDICATOR: GREEN LED FOR OUTPUT PRESENT

PROTECTION

OVER-VOLTAGE: VOLTAGE LIMITED TO LESS THAN 150%, CROWBAR METHOD
 OVERLOAD: HICCUP MODE WITH AUTO-RECOVERY
 SHORT CIRCUIT: HICCUP MODE, OUTPUT WILL AUTORECOVER UPON REMOVAL OF SHORT
 INPUT PROTECTION: INPUT LINE FUSING

SAFETY APPROVALS UL 60601 (THIRD EDITION), CUL TO 22.2 NO. 60601, DEMKO, CE
DIELECTRIC WITHSTAND VOLTAGE: 5656 Vdc FROM PRIMARY TO SECONDARY
EARTH LEAKAGE CURRENT: LESS THAN 300 uA at 240Vac INPUT VOLTAGE

EMI: COMPLIES WITH EN55022 CLASS B AND FCC PART 15 CLASS B, VCCI WHEN TESTED WITH RESISTIVE LOAD, BOTH CONDUCTED AND RADIATED EMI.

CE MARK: TESTED TO COMPLY WITH EN61000-3-2 EN61000-3-3 AND EN50082-1 INCLUDING EN61000-4-2, EN61000-4-3, EN61000-4-4, EN61000-4-5, EN61000-4-6, EN61000-4-11

MTBF: 200,000 HOURS AT 25°C AMBIENT TEMPERATURE

OPERATING TEMPERATURE: 0°C TO 50°C AMBIENT TEMPERATURE
HUMIDITY: 0% TO 90% RELATIVE HUMIDITY
STORAGE TEMPERATURE: - 40°C TO 80°C

ROHS: COMPLIES WITH EU 2002/95/EC AND CHINA SJ/T 11363-2006

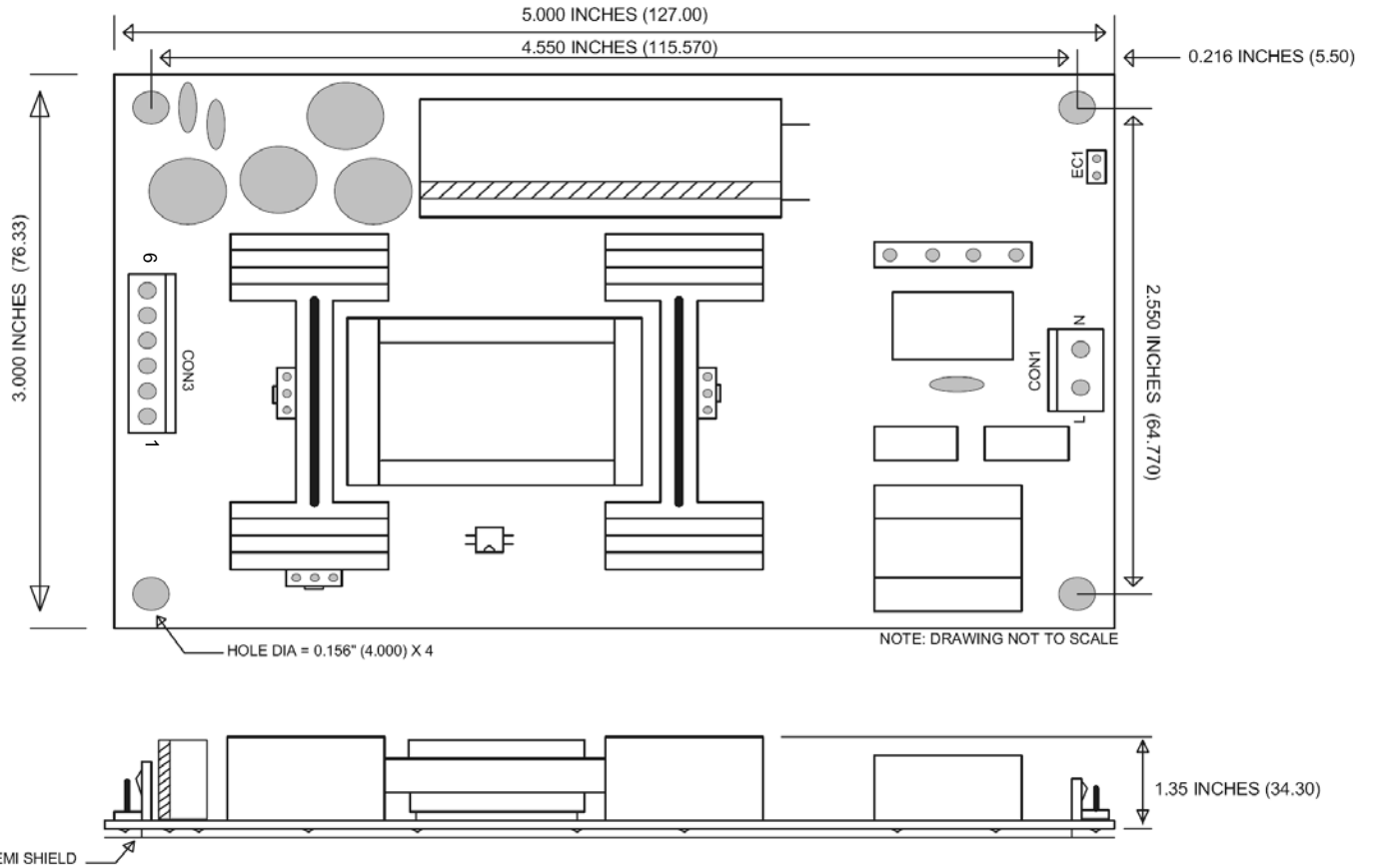
Foot Note: Globtek Inc. will not be liable for the safety and performance of these power supplies if unauthorized access and repair occurs. End user should consult applicable UL, CSA or EN standards for proper installation instructions Limitation of Use: Globtek product are not authorized for use as mission critical components in life support, hazardous environment, nuclear or aircraft applications without prior written approval from the CEO of Globtek Inc. Contents of this document are subject to change without prior notice	DASH NO.	PART NO	REV.	DESCRIPTION	NOTES	
	TABULATION BLOCK					
			TOLERANCES: DECIMALS ANGULAR .xx +/- 0.1 +/- 1° .xxx +/- .005		186 Veterans Dr. Northvale, NJ 07647 Tel. 201-784-1000 Fax 201.784.0111 www.globtek.com	
	INIT.BY: MS	DATE: 07/11/07	MILLIMETERS ANGULAR .xx +/- 0.3 +/- 1° .xxx +/- .013			
DRAWN: NF	DATE: 07/11/07	FSCN No.: G, Y	SIZE A	MODEL NO: GTM2065-6524-F	REV. B	
APRVD : HM	DATE: 07/11/07	SCALE: NONE		PART NO: GTM2065-6524-F(R)	SHEET 1 OF 3	

PROPRIETARY INFORMATION:

PROPRIETARY OF GLOBTEK, INC. ANY REPRODUCTION, DISCLOSURE OR USE OF THIS DRAWING, IN WHOLE OR IN PART, IS HEREBY PROHIBITED EXCEPT AS SPECIFIED IN WRITING BY GLOBTEK, INC.

2. MECHANICAL SPECIFICATION

SIZE: 127 x 76.33 x 34.30 mm




3. INPUT CONNECTOR (CON1)

- 3.1. MOLEX 3-PIN WITH CENTER PIN REMOVED
- 3.2. MOLEX PN: 26-60-4030 MATES W/ PN: 09-50-3031
- 3.3. PIN 1: AC NEUTRAL
PIN 3: AC LINE
EC1: EARTH GROUND FOR CLASS I UNITS ONLY

4. OUTPUT CONNECTOR (CON3)

- 4.1. MOLEX 6-PIN FRICTION LOCK HEADER
- 4.2. MOLEX PN: 26-60-4060 MATES WITH PN: 09-50-3061
- 4.3. PIN 1,2,3: +V
PIN 4,5,6: COMMON

 GlobTek, Inc. 186 Veterans Dr. Northvale, NJ 07647 www.globtek.com Tel. 201-784-1000 Fax 201.784.0111	
DWG TITLE: SWITCHER, 65WATT, 24V@ 2.71A SINGLE OUTPUT, DESKTOP UNIVERSAL INPUT, MEDICAL, CLASS I	
MODEL NO: GTM2065-6524-F	REV. C
PART NO: GTM2065-6524-F(R)	SHEET 2 OF 3

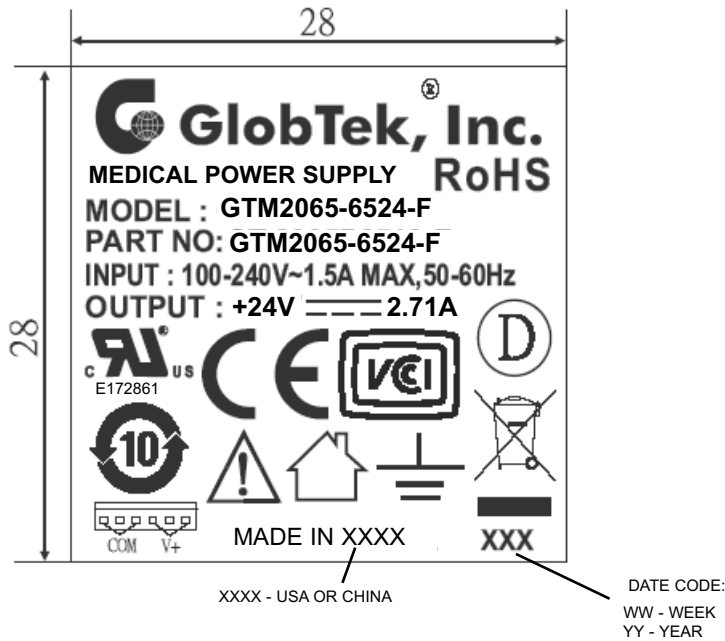
PROPRIETARY INFORMATION:

PROPRIETARY OF GLOBTEK, INC. ANY REPRODUCTION, DISCLOSURE OR USE OF THIS DRAWING, IN WHOLE OR IN PART, IS HEREBY PROHIBITED EXCEPT AS SPECIFIED IN WRITING BY GLOBTEK, INC.

6. LABEL:

MATERIAL: .007 (0.18) THICK FLAT THERMAL TRANSFER, IMPRINTABLE, WHITE OR GRAY POLYESTER SHEET WITH BLACK NOMENCLATURE.

MANUFACTURER: STEVEN LABEL, MATERIAL I.D. NO.3302-33, UL FILE NO. MH12821(N), UL MATERIAL DESIGNATION FILE NO. GHW332RL. OPTIONAL LABEL MATERIAL CAN BE SUBSTITUTED PROVIDING MATERIAL IS UL LISTED AND COMPLIES WITH APPLICABLE SAFETY REQUIREMENTS.



ACTUAL POSITIONING OF SYMBOLS AND TEXT IS SUBJECT TO CHANGE AT TIME OF MANUFACTURE

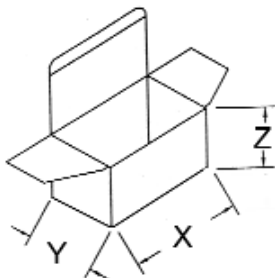
NOTES:



1. LABEL PLACED ON BODY OF ELECTROLYTIC CAPACITOR C1.

7. INDIVIDUAL PACKING BOX:

MATERIAL: CORRUGATED FIBERBOARD, F-FLUTE 0.8 (2.0) THICK, DOUBLE WALL CONSTRUCTION. EXTERNAL FINISH: WHITE, COATED WITH GLOSS FINISH (AQUEOUS OR VARNISH) STYLE: TUCK SIDES WITH LOCKING TABS ON BOTH SIDES OF BOX. NO PRINTING ON THE OUTSIDE OF BOX.



X = 132 mm
Y = 92 mm
Z = 52 mm

GlobTek, Inc. www.globtek.com		186 Veterans Dr. Northvale, NJ 07647 Tel. 201-784-1000 Fax 201.784.0111
DWG TITLE: SWITCHER , 65WATT, 24V@ 2.71A SINGLE OUTPUT, DESKTOP UNIVERSAL INPUT, MEDICAL, CLASS I		
MODEL NO:	GTM2065-6524-F	REV. C
PART NO:	GTM2065-6524-F(R)	SHEET 3 OF 3